

DESCRIPTION

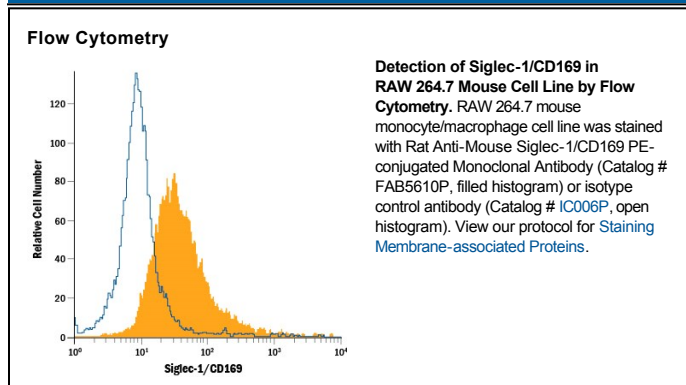
Species Reactivity	Mouse
Specificity	Detects mouse Siglec-1/CD169 in direct ELISAs and Western blots. In direct ELISAs, no cross-reactivity with recombinant human Siglec-1/CD169, -5, -6, -7, -8, -9, -10, -11, -14, recombinant mouse Siglec-2, -3, -E, -F, -G, or -H is observed.
Source	Monoclonal Rat IgG _{2A} Clone # 645608
Purification	Protein A or G purified from hybridoma culture supernatant
Immunogen	Mouse myeloma cell line NS0-derived recombinant mouse Siglec-1/CD169 Thr20-Leu1639 (predicted) Accession # Q62230
Conjugate	Phycoerythrin Excitation Wavelength: 488 nm Emission Wavelength: 565-605 nm
Formulation	Supplied in a saline solution containing BSA and Sodium Azide. See Certificate of Analysis for details. *Contains <0.1% Sodium Azide, which is not hazardous at this concentration according to GHS classifications. Refer to the Safety Data Sheet (SDS) for additional information and handling instructions.

APPLICATIONS

Please Note: Optimal dilutions should be determined by each laboratory for each application. *General Protocols* are available in the *Technical Information* section on our website.

	Recommended Concentration	Sample
Flow Cytometry	10 μ L/10 ⁶ cells	See Below

DATA



PREPARATION AND STORAGE

Shipping	The product is shipped with polar packs. Upon receipt, store it immediately at the temperature recommended below.
Stability & Storage	Protect from light. Do not freeze. <ul style="list-style-type: none"> 12 months from date of receipt, 2 to 8 °C as supplied.

BACKGROUND

Siglec-1, also known as Sialoadhesin or CD169, is a 175-185 kDa type I transmembrane glycoprotein belonging to the Siglec family of sialic acid specific I-type lectins within the immunoglobulin superfamily. Mouse Siglec-1 contains a 1619 amino acid (aa) extracellular domain (ECD) with one Ig-like V-set domain and 16 Ig-like C2-set domains. The ECD shares 73% and 83% aa sequence identity with human and rat Siglec-1, respectively. Alternate splicing generates two soluble isoforms containing either 16 or the first 3 Ig-like domains. Siglec-1 is expressed by some tissue macrophages, dendritic cells and circulating monocytes during certain infections. It binds sialylated molecules including MMR, MGL1/CD301a, MUC1, PSGL-1 and CD43.