

DESCRIPTION

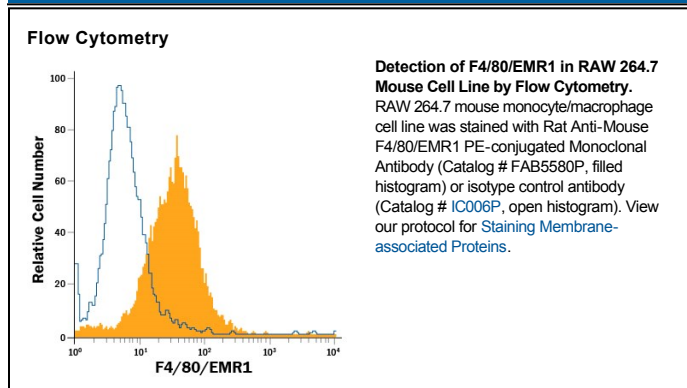
Species Reactivity	Mouse
Specificity	Detects mouse F4/80/EMR1.
Source	Monoclonal Rat IgG _{2A} Clone # 521204
Purification	Protein A or G purified from hybridoma culture supernatant
Immunogen	NS0 mouse myeloma cell line transfected with mouse F4/80/EMR1 Gln28-Gly931 Accession # Q61549
Conjugate	Phycoerythrin Excitation Wavelength: 488 nm Emission Wavelength: 565-605 nm
Formulation	Supplied in a saline solution containing BSA and Sodium Azide. See Certificate of Analysis for details. *Contains <0.1% Sodium Azide, which is not hazardous at this concentration according to GHS classifications. Refer to the Safety Data Sheet (SDS) for additional information and handling instructions.

APPLICATIONS

Please Note: Optimal dilutions should be determined by each laboratory for each application. *General Protocols* are available in the *Technical Information* section on our website.

	Recommended Concentration	Sample
Flow Cytometry	10 μ L/10 ⁶ cells	See Below

DATA



PREPARATION AND STORAGE

Shipping	The product is shipped with polar packs. Upon receipt, store it immediately at the temperature recommended below.
Stability & Storage	Protect from light. Do not freeze. ● 12 months from date of receipt, 2 to 8 °C as supplied.

BACKGROUND

F4/80, also known as EMR1 in humans, is a 160 kDa glycosylated protein that belongs to the EGF-TM7 family of adhesion molecules. It is expressed on splenic red pulp and bone marrow, macrophages, microglia, Langerhans cells, monocytes, eosinophils, and CD116⁺ dendritic cells in mouse, but is restricted to eosinophils in human. F4/80 plays a role in the development of peripheral tolerance, being necessary for the development of CD8⁺ T regs. It also serves as a marker for IL-1 β ⁺ proinflammatory macrophages.