

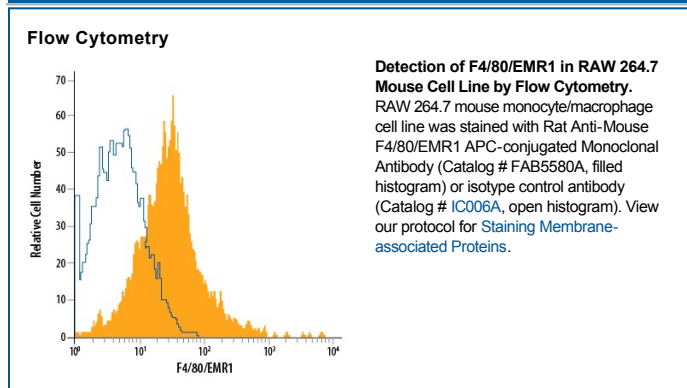
DESCRIPTION	
<b>Species Reactivity</b>	Mouse
<b>Specificity</b>	Detects mouse F4/80/EMR1.
<b>Source</b>	Monoclonal Rat IgG <sub>2A</sub> Clone # 521204
<b>Purification</b>	Protein A or G purified from hybridoma culture supernatant
<b>Immunogen</b>	NS0 mouse myeloma cell line transfected with mouse F4/80/EMR1 Gln28-Gly931 Accession # Q61549
<b>Conjugate</b>	Allophycocyanin Excitation Wavelength: 620-650 nm Emission Wavelength: 660-670 nm
<b>Formulation</b>	Supplied in a saline solution containing BSA and Sodium Azide. See Certificate of Analysis for details.  *Contains <0.1% Sodium Azide, which is not hazardous at this concentration according to GHS classifications. Refer to the Safety Data Sheet (SDS) for additional information and handling instructions.

## APPLICATIONS

**Please Note:** Optimal dilutions should be determined by each laboratory for each application. *General Protocols* are available in the *Technical Information* section on our website.

	Recommended Concentration	Sample
<b>Flow Cytometry</b>	0.25-1 µg/10 <sup>6</sup> cells	See Below

## DATA



## PREPARATION AND STORAGE

<b>Shipping</b>	The product is shipped with polar packs. Upon receipt, store it immediately at the temperature recommended below.
<b>Stability &amp; Storage</b>	<b>Protect from light. Do not freeze.</b> <ul style="list-style-type: none"> <li>12 months from date of receipt, 2 to 8 °C as supplied.</li> </ul>

## BACKGROUND

F4/80, also known as EMR1, is a 160 kDa extensively glycosylated protein in the EGF-TM7 family of adhesion molecules. It is primarily expressed on macrophages and dendritic cells in mouse but is restricted to eosinophils in human. F4/80 plays a role in the development of peripheral tolerance.