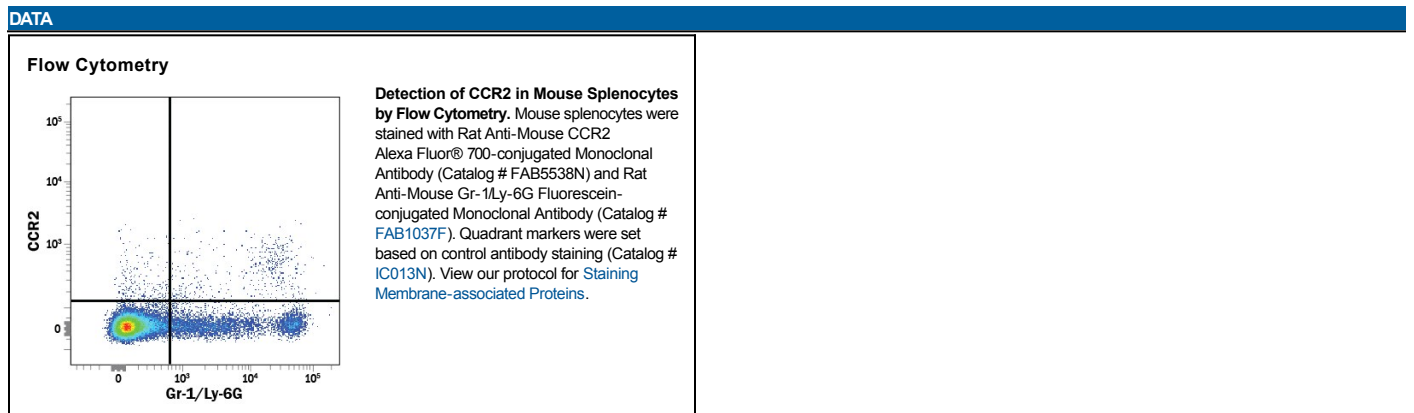


DESCRIPTION	
<b>Species Reactivity</b>	Mouse
<b>Specificity</b>	Detects mouse and rat CCR2 transfectants but not the parental cell line in flow cytometry. Does not detect HEK293 human embryonic kidney cell line transfected with mouse CCR5 in flow cytometry.
<b>Source</b>	Monoclonal Rat IgG <sub>2B</sub> Clone # 475301
<b>Purification</b>	Protein A or G purified from hybridoma culture supernatant
<b>Immunogen</b>	L1.2 mouse pro-B cell line transfected with mouse CCR2
<b>Conjugate</b>	Alexa Fluor 700 Excitation Wavelength: 675-700 nm Emission Wavelength: 723 nm
<b>Formulation</b>	Supplied in a saline solution containing BSA and Sodium Azide. See Certificate of Analysis for details.  *Contains <0.1% Sodium Azide, which is not hazardous at this concentration according to GHS classifications. Refer to the Safety Data Sheet (SDS) for additional information and handling instructions.

APPLICATIONS		
<i>Please Note: Optimal dilutions should be determined by each laboratory for each application. General Protocols are available in the Technical Information section on our website.</i>		
	<b>Recommended Concentration</b>	<b>Sample</b>
<b>Flow Cytometry</b>	5 µL/10 <sup>6</sup> cells	See Below



PREPARATION AND STORAGE	
<b>Shipping</b>	The product is shipped with polar packs. Upon receipt, store it immediately at the temperature recommended below.
<b>Stability &amp; Storage</b>	<b>Protect from light. Do not freeze.</b> <ul style="list-style-type: none"> <li>● 12 months from date of receipt, 2 to 8 °C as supplied.</li> </ul>

**BACKGROUND**

CCR2, also known as CD192, is a 38 kDa 7TM chemokine receptor that preferentially binds CCL2, CCL7, and CCL13. CCR2 is expressed by multiple hematopoietic cells, endothelial cells, fibroblasts, neurons, and smooth muscle cells. It functions as an HIV fusion co-factor and facilitates T cell recruitment during inflammation. Two alternate splice forms (CCR2A and CCR2B) differ only by the addition of 14 amino acids to the intracellular carboxyl terminal. Mouse CCR2 shares 67% and 95% aa sequence identity with human and rat CCR2, respectively.

**PRODUCT SPECIFIC NOTICES**

This product is provided under an agreement between Life Technologies Corporation and R&D Systems, Inc, and the manufacture, use, sale or import of this product is subject to one or more US patents and corresponding non-US equivalents, owned by Life Technologies Corporation and its affiliates. The purchase of this product conveys to the buyer the non-transferable right to use the purchased amount of the product and components of the product only in research conducted by the buyer (whether the buyer is an academic or for-profit entity). The sale of this product is expressly conditioned on the buyer not using the product or its components (1) in manufacturing; (2) to provide a service, information, or data to an unaffiliated third party for payment; (3) for therapeutic, diagnostic or prophylactic purposes; (4) to resell, sell, or otherwise transfer this product or its components to any third party, or for any other commercial purpose. Life Technologies Corporation will not assert a claim against the buyer of the infringement of the above patents based on the manufacture, use or sale of a commercial product developed in research by the buyer in which this product or its components was employed, provided that neither this product nor any of its components was used in the manufacture of such product. For information on purchasing a license to this product for purposes other than research, contact Life Technologies Corporation, Cell Analysis Business Unit, Business Development, 29851 Willow Creek Road, Eugene, OR 97402, Tel: (541) 465-8300. Fax: (541) 335-0354.