

## DESCRIPTION

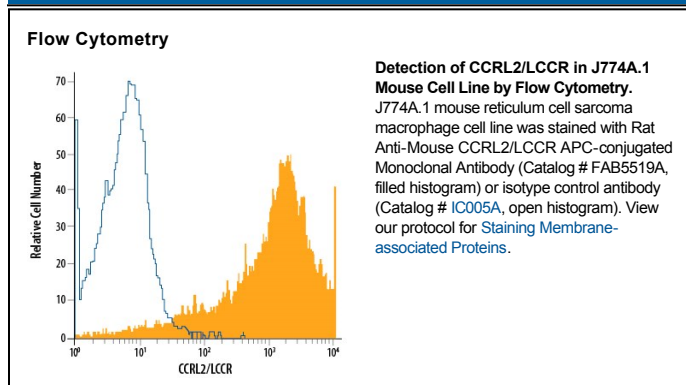
<b>Species Reactivity</b>	Mouse
<b>Specificity</b>	Detects mouse CCRL2/LCCR in direct ELISAs.
<b>Source</b>	Monoclonal Rat IgG <sub>1</sub> Clone # 498321
<b>Purification</b>	Protein A or G purified from hybridoma culture supernatant
<b>Immunogen</b>	RBL-1 rat basophilic leukemia cell line transfected with mouse CCRL2/LCCR Accession # O35457
<b>Conjugate</b>	Allophycocyanin Excitation Wavelength: 620-650 nm Emission Wavelength: 660-670 nm
<b>Formulation</b>	Supplied in a saline solution containing BSA and Sodium Azide. See Certificate of Analysis for details.  *Contains <0.1% Sodium Azide, which is not hazardous at this concentration according to GHS classifications. Refer to the Safety Data Sheet (SDS) for additional information and handling instructions.

## APPLICATIONS

**Please Note:** Optimal dilutions should be determined by each laboratory for each application. *General Protocols* are available in the *Technical Information* section on our website.

	<b>Recommended Concentration</b>	<b>Sample</b>
<b>Flow Cytometry</b>	10 $\mu$ L/10 <sup>6</sup> cells	See Below

## DATA



## PREPARATION AND STORAGE

<b>Shipping</b>	The product is shipped with polar packs. Upon receipt, store it immediately at the temperature recommended below.
<b>Stability &amp; Storage</b>	<b>Protect from light. Do not freeze.</b> <ul style="list-style-type: none"> <li>● 12 months from date of receipt, 2 to 8 °C as supplied.</li> </ul>

## BACKGROUND

Lipopolysaccharide-inducible CC chemokine receptor (LCCR), also known as CCRL2, is a 7TM chemokine receptor-like protein that is expressed on macrophages, glial cells, and mast cells at inflammatory sites. LCCR functions as a receptor for Chemerin, CCL2, 5, 7, and 8. Mouse LCCR shares 49% and 70% aa sequence identity with human and rat LCCR, respectively.