

DESCRIPTION

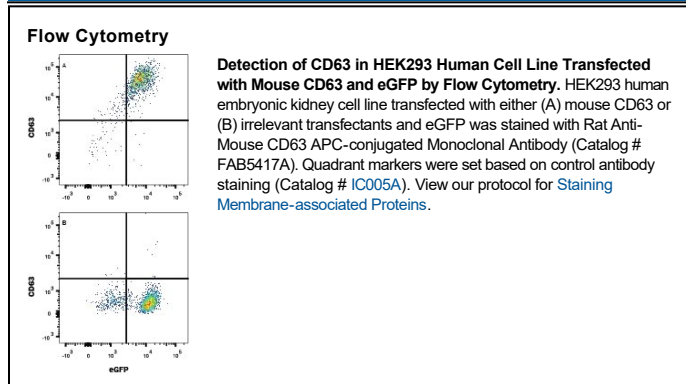
Species Reactivity	Mouse
Specificity	Detects mouse CD63 in direct ELISAs.
Source	Monoclonal Rat IgG ₁ Clone # 446703
Purification	Protein A or G purified from hybridoma culture supernatant
Immunogen	HEK293 human embryonic kidney cell line transfected with mouse CD63 Met1-Met238 Accession # P41731
Conjugate	Allophycocyanin Excitation Wavelength: 620-650 nm Emission Wavelength: 660-670 nm
Formulation	Supplied in a saline solution containing BSA and Sodium Azide. See Certificate of Analysis for details. *Contains <0.1% Sodium Azide, which is not hazardous at this concentration according to GHS classifications. Refer to the Safety Data Sheet (SDS) for additional information and handling instructions.

APPLICATIONS

Please Note: Optimal dilutions should be determined by each laboratory for each application. *General Protocols* are available in the *Technical Information* section on our website.

	Recommended Concentration	Sample
Flow Cytometry	10 μ L/10 ⁶ cells	See Below

DATA



PREPARATION AND STORAGE

Shipping	The product is shipped with polar packs. Upon receipt, store it immediately at the temperature recommended below.
Stability & Storage	Protect from light. Do not freeze. <ul style="list-style-type: none"> 12 months from date of receipt, 2 to 8 °C as supplied.

BACKGROUND

CD63, also known as LAMP-3 or ME491 (melanoma-associated antigen), is a 30-60 kDa member of the tetraspanin superfamily of protein trafficking molecules. CD63 is ubiquitously expressed and found in late endocytic vesicles, but following cell activation, is also present on the plasma membrane. Interaction of CD63 with other membrane proteins or adaptors regulates cell activities such as adhesion, migration and degranulation. Extracellular regions of mouse CD63 share 94% and 67% amino acid sequence identity with rat and human CD63, respectively.