

DESCRIPTION

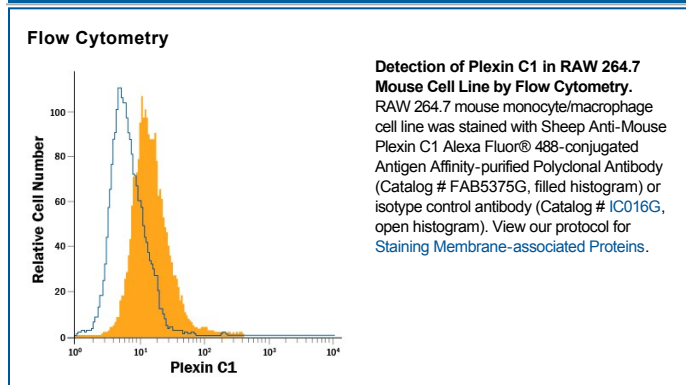
Species Reactivity	Mouse
Specificity	Detects mouse Plexin C1 in direct ELISAs and Western blots. In direct ELISAs and Western blots, less than 1% cross-reactivity with recombinant mouse Plexin A1, A2, A3, recombinant human Plexin B1, B2, and D1 is observed.
Source	Polyclonal Sheep IgG
Purification	Antigen Affinity-purified
Immunogen	Chinese hamster ovary cell line CHO-derived recombinant mouse Plexin C1 Ala35-Thr950 Accession # Q9QZC2
Conjugate	Alexa Fluor 488 Excitation Wavelength: 488 nm Emission Wavelength: 515-545 nm
Formulation	Supplied in a saline solution containing BSA and Sodium Azide. See Certificate of Analysis for details. *Contains <0.1% Sodium Azide, which is not hazardous at this concentration according to GHS classifications. Refer to the Safety Data Sheet (SDS) for additional information and handling instructions.

APPLICATIONS

Please Note: Optimal dilutions should be determined by each laboratory for each application. *General Protocols* are available in the *Technical Information* section on our website.

	Recommended Concentration	Sample
Flow Cytometry	5 μ L/ 10^6 cells	See Below

DATA



PREPARATION AND STORAGE

Shipping	The product is shipped with polar packs. Upon receipt, store it immediately at the temperature recommended below.
Stability & Storage	Protect from light. Do not freeze. ● 12 months from date of receipt, 2 to 8 °C as supplied.

BACKGROUND

Plexin C1 (also VESPR and CD232) is a 200-210 kDa member of the plexin C subfamily, plexin family of proteins. It is a type I transmembrane glycoprotein that is found on monocytes, dendritic cells, neutrophils and embryonic neuroendocrine neurons of the hypothalamus. Plexin C1 binds Sema7A, and its viral counterpart, vaccinia semaphorin A39R. Ligation induces actin cytoskeletal rearrangement and cell immobilization. Mature mouse Plexin C1 is 1540 amino acids (aa) in length. It contains a 916 aa extracellular domain that shows one Sema-domain (aa 35-452) and a 603 aa cytoplasmic tail. There are two potential splice variants that show a five and 67 aa substitution for aa 861-870 and 1206-1574, respectively. Over aa 35-950, mouse Plexin C1 is 95% and 85% aa identical to rat and human Plexin C1, respectively.

PRODUCT SPECIFIC NOTICES

This product is provided under an agreement between Life Technologies Corporation and R&D Systems, Inc, and the manufacture, use, sale or import of this product is subject to one or more US patents and corresponding non-US equivalents, owned by Life Technologies Corporation and its affiliates. The purchase of this product conveys to the buyer the non-transferable right to use the purchased amount of the product and components of the product only in research conducted by the buyer (whether the buyer is an academic or for-profit entity). The sale of this product is expressly conditioned on the buyer not using the product or its components (1) in manufacturing; (2) to provide a service, information, or data to an unaffiliated third party for payment; (3) for therapeutic, diagnostic or prophylactic purposes; (4) to resell, sell, or otherwise transfer this product or its components to any third party, or for any other commercial purpose. Life Technologies Corporation will not assert a claim against the buyer of the infringement of the above patents based on the manufacture, use or sale of a commercial product developed in research by the buyer in which this product or its components was employed, provided that neither this product nor any of its components was used in the manufacture of such product. For information on purchasing a license to this product for purposes other than research, contact Life Technologies Corporation, Cell Analysis Business Unit, Business Development, 29851 Willow Creek Road, Eugene, OR 97402, Tel: (541) 465-8300. Fax: (541) 335-0354.