

DESCRIPTION

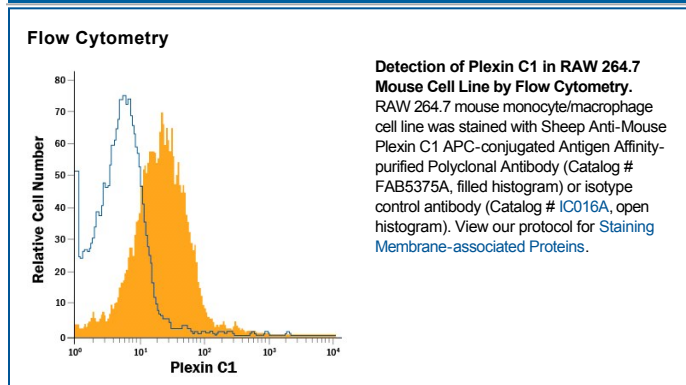
Species Reactivity	Mouse
Specificity	Detects mouse Plexin C1 in direct ELISAs and Western blots. In direct ELISAs and Western blots, less than 1% cross-reactivity with recombinant mouse Plexin A1, A2, A3, recombinant human Plexin B1, B2, and D1 is observed.
Source	Polyclonal Sheep IgG
Purification	Antigen Affinity-purified
Immunogen	Chinese hamster ovary cell line CHO-derived recombinant mouse Plexin C1 Ala35-Thr950 Accession # Q9QZC2
Conjugate	Allophycocyanin Excitation Wavelength: 620-650 nm Emission Wavelength: 660-670 nm
Formulation	Supplied in a saline solution containing BSA and Sodium Azide. See Certificate of Analysis for details. *Contains <0.1% Sodium Azide, which is not hazardous at this concentration according to GHS classifications. Refer to the Safety Data Sheet (SDS) for additional information and handling instructions.

APPLICATIONS

Please Note: Optimal dilutions should be determined by each laboratory for each application. *General Protocols* are available in the *Technical Information* section on our website.

	Recommended Concentration	Sample
Flow Cytometry	10 μ L/10 ⁶ cells	See Below

DATA



PREPARATION AND STORAGE

Shipping	The product is shipped with polar packs. Upon receipt, store it immediately at the temperature recommended below.
Stability & Storage	Protect from light. Do not freeze. <ul style="list-style-type: none"> ● 12 months from date of receipt, 2 to 8 °C as supplied.

BACKGROUND

Plexin C1 (also VESPR and CD232) is a 200-210 kDa member of the plexin C subfamily, plexin family of proteins. It is a type I transmembrane glycoprotein that is found on monocytes, dendritic cells, neutrophils and embryonic neuroendocrine neurons of the hypothalamus. Plexin C1 binds Sema7A, and its viral counterpart, vaccinia semaphorin A39R. Ligand induces actin cytoskeletal rearrangement and cell immobilization. Mature mouse Plexin C1 is 1540 amino acids (aa) in length. It contains a 916 aa extracellular domain that shows one Sema-domain (aa 35-452) and a 603 aa cytoplasmic tail. There are two potential splice variants that show a five and 67 aa substitution for aa 861-870 and 1206-1574, respectively. Over aa 35-950, mouse Plexin C1 is 95% and 85% aa identical to rat and human Plexin C1, respectively.