

## DESCRIPTION

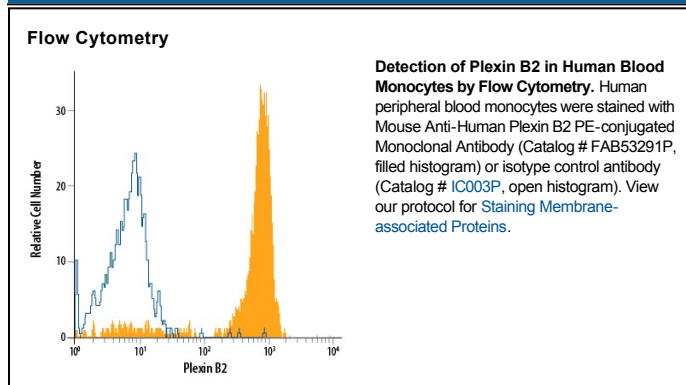
<b>Species Reactivity</b>	Human
<b>Specificity</b>	Detects human Plexin B2.
<b>Source</b>	Monoclonal Mouse IgG <sub>2A</sub> Clone # 537223
<b>Purification</b>	Protein A or G purified from hybridoma culture supernatant
<b>Immunogen</b>	Chinese hamster ovary cell line CHO-derived recombinant human Plexin B2 Leu20-Arg1160 Accession # O15031
<b>Conjugate</b>	Phycoerythrin Excitation Wavelength: 488 nm Emission Wavelength: 565-605 nm
<b>Formulation</b>	Supplied in a saline solution containing BSA and Sodium Azide. See Certificate of Analysis for details.  *Contains <0.1% Sodium Azide, which is not hazardous at this concentration according to GHS classifications. Refer to the Safety Data Sheet (SDS) for additional information and handling instructions.

## APPLICATIONS

**Please Note:** Optimal dilutions should be determined by each laboratory for each application. *General Protocols* are available in the *Technical Information* section on our website.

	Recommended Concentration	Sample
<b>Flow Cytometry</b>	10 $\mu$ L/10 <sup>6</sup> cells	See Below

## DATA



## PREPARATION AND STORAGE

**Shipping** The product is shipped with polar packs. Upon receipt, store it immediately at the temperature recommended below.

**Stability & Storage** **Protect from light. Do not freeze.**

- 12 months from date of receipt, 2 to 8 °C as supplied.

## BACKGROUND

Plexin B2 is a 240 kDa member of the B subfamily, plexin family of semaphorin receptors. It is expressed by cerebellar granule cells, neuroepithelium and chondrocytes, and serves as a receptor for Semaphorin 4C. Mature human Plexin B2 is 1819 amino acid (aa) in length. It is a type I transmembrane (TM) glycoprotein that contains an 1178 aa extracellular domain (ECD) plus a 620 aa cytoplasmic region. The ECD contains one semaphorin domain (aa 20–466) and three IPT repeats (aa 803–1092). The ECD may be cleaved into two subunits, a 170 kDa  $\alpha$ -chain (aa 20–1164) and an 80 kDa TM  $\beta$ -chain that remain noncovalently-linked. Multiple splice variants may exist. One shows an alternate start site at Met1369, while a second shows a deletion of aa 67–638. Over aa 20–1160, human Plexin B2 is 82% aa identical to mouse Plexin B2.