

DESCRIPTION

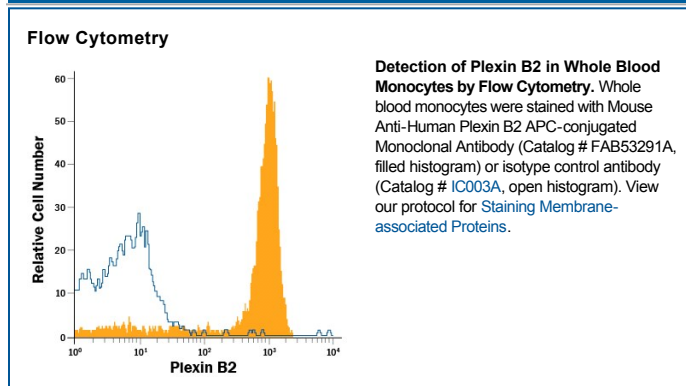
Species Reactivity	Human
Specificity	Detects human Plexin B2 in flow cytometry.
Source	Monoclonal Mouse IgG _{2A} Clone # 537223
Purification	Protein A or G purified from hybridoma culture supernatant
Immunogen	Chinese hamster ovary cell line CHO-derived recombinant human Plexin B2 Leu20-Arg1160 Accession # O15031
Conjugate	Allophycocyanin Excitation Wavelength: 620-650 nm Emission Wavelength: 660-670 nm
Formulation	Supplied in a saline solution containing BSA and Sodium Azide. See Certificate of Analysis for details. *Contains <0.1% Sodium Azide, which is not hazardous at this concentration according to GHS classifications. Refer to the Safety Data Sheet (SDS) for additional information and handling instructions.

APPLICATIONS

Please Note: Optimal dilutions should be determined by each laboratory for each application. *General Protocols* are available in the *Technical Information* section on our website.

	Recommended Concentration	Sample
Flow Cytometry	10 μ L/10 ⁶ cells	See Below

DATA



PREPARATION AND STORAGE

Shipping	The product is shipped with polar packs. Upon receipt, store it immediately at the temperature recommended below.
Stability & Storage	Protect from light. Do not freeze. <ul style="list-style-type: none"> 12 months from date of receipt, 2 to 8 °C as supplied.

BACKGROUND

Plexin B2 is a 240 kDa member of the B subfamily, plexin family of semaphorin receptors. It is expressed by cerebellar granule cells, neuroepithelium and chondrocytes, and serves as a receptor for Semaphorin 4C. Mature human Plexin B2 is 1819 amino acid (aa) in length. It is a type I transmembrane (TM) glycoprotein that contains an 1178 aa extracellular domain (ECD) plus a 620 aa cytoplasmic region. The ECD contains one semaphorin domain (aa 20-466) and three IPT repeats (aa 803-1092). The ECD may be cleaved into two subunits, a 170 kDa α -chain (aa 20-1164) and an 80 kDa TM β -chain that remain noncovalently-linked. Multiple splice variants may exist. One shows an alternate start site at Met1369, while a second shows a deletion of aa 67-638. Over aa 20-1160, human Plexin B2 is 82% aa identical to mouse Plexin B2.