

DESCRIPTION

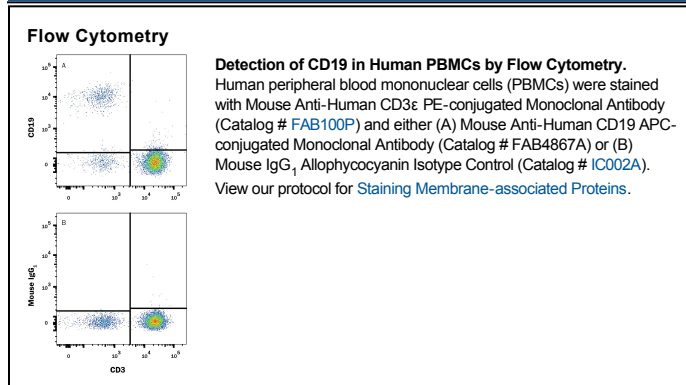
Species Reactivity	Human
Specificity	Detects human CD19.
Source	Monoclonal Mouse IgG ₁ Clone # 4G7-2E3
Purification	Protein A or G purified from hybridoma culture supernatant
Immunogen	Human CLL cells
Conjugate	Allophycocyanin Excitation Wavelength: 620-650 nm Emission Wavelength: 660-670 nm
Formulation	Supplied in a saline solution containing BSA and Sodium Azide. See Certificate of Analysis for details. *Contains <0.1% Sodium Azide, which is not hazardous at this concentration according to GHS classifications. Refer to the Safety Data Sheet (SDS) for additional information and handling instructions.

APPLICATIONS

Please Note: Optimal dilutions should be determined by each laboratory for each application. *General Protocols* are available in the *Technical Information* section on our website.

	Recommended Concentration	Sample
Flow Cytometry	10 μ L/10 ⁶ cells	See Below

DATA



PREPARATION AND STORAGE

Shipping	The product is shipped with polar packs. Upon receipt, store it immediately at the temperature recommended below.
Stability & Storage	Protect from light. Do not freeze. <ul style="list-style-type: none"> 12 months from date of receipt, 2 to 8 °C as supplied.

BACKGROUND

CD19 is a 95 kDa transmembrane glycoprotein with two Ig-like C2-set domains. CD19 regulates B cell development and activation through interactions with CD21, CD22, and the B cell receptor. CD19 polymorphisms and up-regulation lead to the development of autoimmunity by promoting autoantibody production. Within the extracellular domain, human CD19 (Accession # P15391) shares 57% amino acid sequence identity with mouse and rat CD19.