

## DESCRIPTION

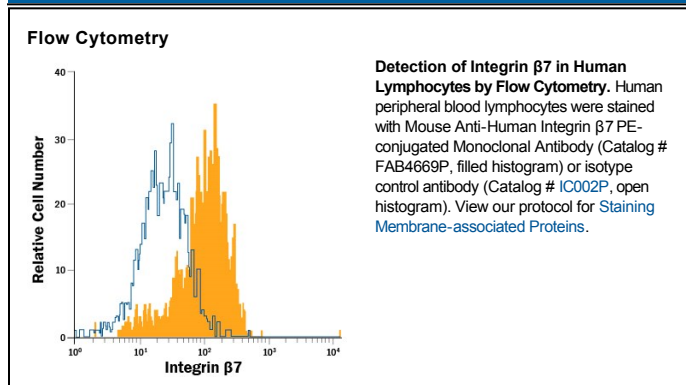
<b>Species Reactivity</b>	Human
<b>Specificity</b>	Detects human Integrin $\beta 7$ in direct ELISAs and Western blots. In Western blots, no cross-reactivity with recombinant human Integrin $\beta 1$ , $\beta 2$ , $\beta 3$ , $\beta 4$ , $\beta 5$ , $\beta 6$ , $\beta 8$ , recombinant mouse Integrin $\beta 4$ , or $\beta 7$ is observed.
<b>Source</b>	Monoclonal Mouse IgG <sub>1</sub> Clone # 473207
<b>Purification</b>	Protein A or G purified from hybridoma culture supernatant
<b>Immunogen</b>	Chinese hamster ovary cell line CHO-derived recombinant human Integrin $\beta 7$ long isoform Glu20-His723 Accession # P26010
<b>Conjugate</b>	Phycoerythrin Excitation Wavelength: 488 nm Emission Wavelength: 565-605 nm
<b>Formulation</b>	Supplied in a saline solution containing BSA and Sodium Azide. See Certificate of Analysis for details.  *Contains <0.1% Sodium Azide, which is not hazardous at this concentration according to GHS classifications. Refer to the Safety Data Sheet (SDS) for additional information and handling instructions.

## APPLICATIONS

**Please Note:** Optimal dilutions should be determined by each laboratory for each application. *General Protocols* are available in the *Technical Information* section on our website.

	<b>Recommended Concentration</b>	<b>Sample</b>
<b>Flow Cytometry</b>	10 $\mu$ L/10 <sup>6</sup> cells	See Below

## DATA



## PREPARATION AND STORAGE

<b>Shipping</b>	The product is shipped with polar packs. Upon receipt, store it immediately at the temperature recommended below.
<b>Stability &amp; Storage</b>	<b>Protect from light. Do not freeze.</b> ● 12 months from date of receipt, 2 to 8 °C as supplied.

## BACKGROUND

Human Integrin  $\beta 7$ , also known as Integrin  $\beta P$  and M290 IEL Ag, is a 120 kDa member of the Integrin beta chain family of molecules. It is a type I transmembrane glycoprotein that contains a 704 amino acid (aa) extracellular domain (ECD) (aa 20–723) and a 52 aa cytoplasmic tail. The ECD contains one von Willebrand factor A domain (aa 150–389) and four cysteine-rich EGF-like repeats. One splice variant exists that shows a deletion of aa 501–648. Integrin  $\beta 7$  forms a nondisulfide linked heterodimer with  $\alpha 4$  and  $\alpha E$  integrins.  $\alpha 4\beta 7$  binds fibronectin, VCAM-1 and MADCAM1, while  $\alpha E\beta 7$  binds E-cadherin. The ECD of human  $\beta 7$  is 87% aa identical to the ECD of mouse  $\beta 7$ .