

## DESCRIPTION

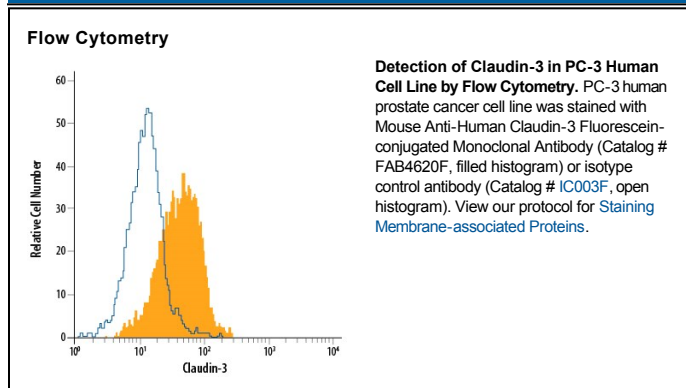
<b>Species Reactivity</b>	Human
<b>Specificity</b>	Stains human Claudin-3 transfectants but not irrelevant transfectants.
<b>Source</b>	Monoclonal Mouse IgG <sub>2A</sub> Clone # 385021
<b>Purification</b>	Protein A or G purified from hybridoma culture supernatant
<b>Immunogen</b>	HEK293 human embryonic kidney cell line transfected with human Claudin-3 Met1-Val220 Accession # O15551
<b>Conjugate</b>	Fluorescein Excitation Wavelength: 488 nm Emission Wavelength: 515-545 nm (FITC)
<b>Formulation</b>	Supplied in a saline solution containing BSA and Sodium Azide. See Certificate of Analysis for details.  *Contains <0.1% Sodium Azide, which is not hazardous at this concentration according to GHS classifications. Refer to the Safety Data Sheet (SDS) for additional information and handling instructions.

## APPLICATIONS

**Please Note:** Optimal dilutions should be determined by each laboratory for each application. *General Protocols* are available in the *Technical Information* section on our website.

	Recommended Concentration	Sample
<b>Flow Cytometry</b>	10 $\mu$ L/10 <sup>6</sup> cells	See Below

## DATA



## PREPARATION AND STORAGE

<b>Shipping</b>	The product is shipped with polar packs. Upon receipt, store it immediately at the temperature recommended below.
<b>Stability &amp; Storage</b>	<b>Protect from light. Do not freeze.</b> <ul style="list-style-type: none"> <li>12 months from date of receipt, 2 to 8 °C as supplied.</li> </ul>

## BACKGROUND

Claudin-3 is a 23 kDa multipass membrane protein in the claudin family of epithelial tight junction proteins. Claudin-3 is upregulated by EGF and in inflammation and a variety of epithelial cancers. Its expression is lost in the blood brain barrier during pathological disruptions of that structure. Claudin-3 binding to the *Clostridium perfringens* exotoxin induces epithelial cell lysis. Human Claudin-3 shares 91% amino acid sequence identity with mouse and rat Claudin-3.