

DESCRIPTION

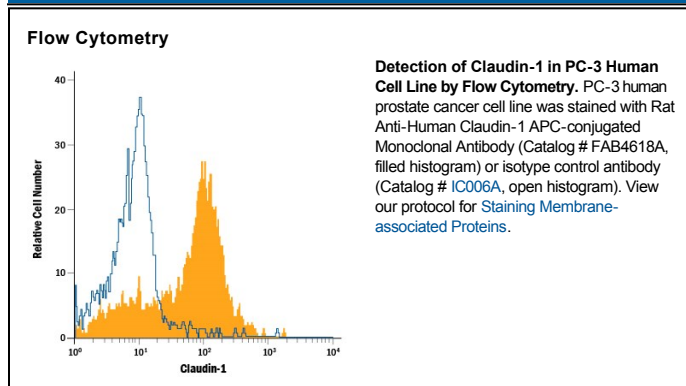
Species Reactivity	Human
Specificity	Stains human Claudin-1 transfectants but not irrelevant transfectants.
Source	Monoclonal Rat IgG _{2A} Clone # 421203
Purification	Protein A or G purified from hybridoma culture supernatant
Immunogen	CHO Chinese hamster ovary cell line transfected with human Claudin-1 Met1-Val211 Accession # O95832
Conjugate	Allophycocyanin Excitation Wavelength: 620-650 nm Emission Wavelength: 660-670 nm
Formulation	Supplied in a saline solution containing BSA and Sodium Azide. See Certificate of Analysis for details. *Contains <0.1% Sodium Azide, which is not hazardous at this concentration according to GHS classifications. Refer to the Safety Data Sheet (SDS) for additional information and handling instructions.

APPLICATIONS

Please Note: Optimal dilutions should be determined by each laboratory for each application. *General Protocols* are available in the *Technical Information* section on our website.

	Recommended Concentration	Sample
Flow Cytometry	10 μ L/10 ⁶ cells	See Below

DATA



PREPARATION AND STORAGE

Shipping	The product is shipped with polar packs. Upon receipt, store it immediately at the temperature recommended below.
Stability & Storage	Protect from light. Do not freeze. <ul style="list-style-type: none"> 12 months from date of receipt, 2 to 8 °C as supplied.

BACKGROUND

Claudin-1 is a 23 kDa multipass membrane protein in the Claudin family of epithelial tight junction proteins. Claudin-1 is expressed by epithelial cells in a wide variety of tissues as well as in Langerhans cells and dendritic cells. It is up or downregulated in many cancers and is required for the entry of hepatitis C virus into hepatocytes. Human Claudin-1 shares 91% aa sequence identity with mouse and rat Claudin-1.