

DESCRIPTION

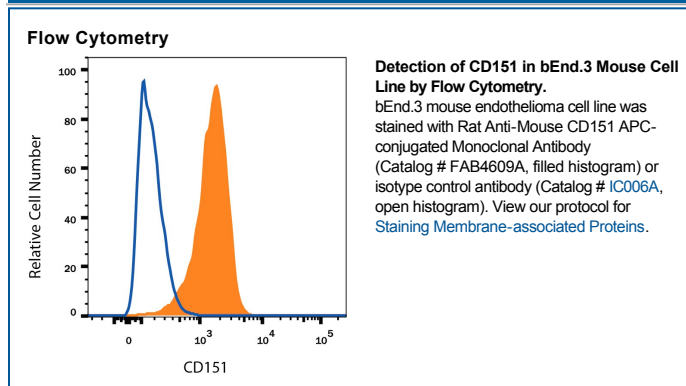
Species Reactivity	Mouse
Specificity	Detects mouse CD151. Stains mouse CD151 transfectants but not irrelevant transfectants.
Source	Monoclonal Rat IgG _{2A} Clone # 455807
Purification	Protein A or G purified from hybridoma culture supernatant
Immunogen	HEK293 human embryonic kidney cell line transfected with mouse CD151 Met1-Tyr253 Accession # BAA22447
Conjugate	Allophycocyanin Excitation Wavelength: 620-650 nm Emission Wavelength: 660-670 nm
Formulation	Supplied in a saline solution containing BSA and Sodium Azide. See Certificate of Analysis for details. *Contains <0.1% Sodium Azide, which is not hazardous at this concentration according to GHS classifications. Refer to the Safety Data Sheet (SDS) for additional information and handling instructions.

APPLICATIONS

Please Note: Optimal dilutions should be determined by each laboratory for each application. *General Protocols* are available in the *Technical Information* section on our website.

	Recommended Concentration	Sample
Flow Cytometry	10 μ L/10 ⁶ cells	See Below

DATA



PREPARATION AND STORAGE

Shipping	The product is shipped with polar packs. Upon receipt, store it immediately at the temperature recommended below.
Stability & Storage	Protect from light. Do not freeze. <ul style="list-style-type: none"> 12 months from date of receipt, 2 to 8 °C as supplied.

BACKGROUND

CD151 is a 29 kDa palmitoylated glycoprotein in the tetraspanin superfamily and is expressed by endothelial cells, epithelial cells, megakaryocytes, and platelets. It associates with other tetraspanin proteins and with some integrins including α 3/ β 1, α 6/ β 1, α 6/ β 4, and α 7/ β 1. CD151 modulates cellular adhesion, cell migration, and platelet activation. Mouse CD151 shares 94% - 96% aa sequence identity with human and rat CD151.