

## DESCRIPTION

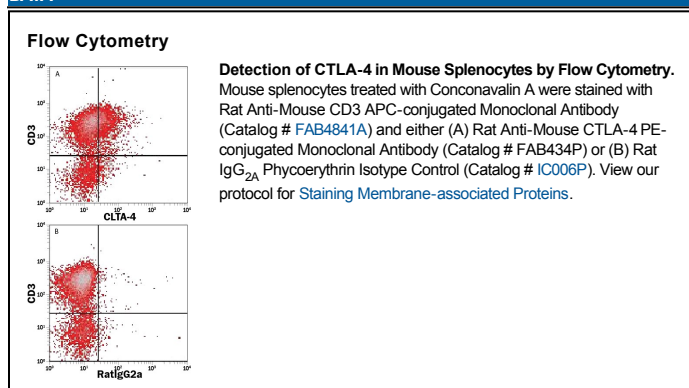
<b>Species Reactivity</b>	Mouse
<b>Specificity</b>	Detects mouse CTLA-4 in direct ELISAs and Western blots. In direct ELISAs, this antibody does not cross-react with recombinant mouse (rm) CD28, recombinant human CTLA-4, rmlCOS, or rmPD-1.
<b>Source</b>	Monoclonal Rat IgG <sub>2A</sub> Clone # 63828
<b>Purification</b>	Protein A or G purified from hybridoma culture supernatant
<b>Immunogen</b>	Mouse myeloma cell line NS0-derived recombinant mouse CTLA-4 Ala36-Phe161 Accession # XP_001479180
<b>Conjugate</b>	Phycoerythrin Excitation Wavelength: 488 nm Emission Wavelength: 565-605 nm
<b>Formulation</b>	Supplied in a saline solution containing BSA and Sodium Azide. See Certificate of Analysis for details.  *Contains <0.1% Sodium Azide, which is not hazardous at this concentration according to GHS classifications. Refer to the Safety Data Sheet (SDS) for additional information and handling instructions.

## APPLICATIONS

**Please Note:** Optimal dilutions should be determined by each laboratory for each application. *General Protocols* are available in the *Technical Information* section on our website.

	Recommended Concentration	Sample
<b>Flow Cytometry</b>	10 $\mu$ L/10 <sup>6</sup> cells	See Below

## DATA



## PREPARATION AND STORAGE

<b>Shipping</b>	The product is shipped with polar packs. Upon receipt, store it immediately at the temperature recommended below.
<b>Stability &amp; Storage</b>	<b>Protect from light. Do not freeze.</b> <ul style="list-style-type: none"> <li>12 months from date of receipt, 2 to 8 °C as supplied.</li> </ul>

## BACKGROUND

CTLA-4 (also known as CD152) and CD28, together with their ligands B7-1 and B7-2, constitute one of the dominant costimulatory pathways that regulate T and B cell responses. CTLA-4 and CD28 are structurally homologous molecules that are members of the immunoglobulin (Ig) gene superfamily. Both CTLA-4 and CD28 are composed of a single Ig V-like extracellular domain, a transmembrane domain and an intracellular domain. CTLA-4 is expressed on the cell surface as either a disulfide-linked homodimer or a 24-26 kDa monomer. CTLA-4 was originally identified as a gene that was specifically expressed by cytotoxic T lymphocytes. However, CTLA-4 transcripts have since been found in both Th1 and Th2, and CD4<sup>+</sup> and CD8<sup>+</sup> T cell clones. Whereas, CD28 expression is constitutive on the surfaces of 95% of CD4<sup>+</sup> T cells and 50% of CD8<sup>+</sup> T cells, and is down regulated upon T cell activation, CTLA-4 expression is upregulated rapidly following T cell activation and peaks approximately 24 hours following activation. Although both CTLA-4 and CD28 can bind to the same ligands, CTLA-4 binds to B7-1 and B7-2 with 20-100-fold higher affinity than CD28. The physiological role of CTLA-4 in T cell costimulation is contextually defined. Full-length CTLA-4, when induced and activated, sends an inhibitory signal to the expressing T cell. It also promotes the development of T<sub>c</sub>17 cells. Tregs constitutively express CTLA-4, a phenotype that is essential to their function. Over amino acids (aa) 36-161, mouse CTLA-4 shares 94% and 67% aa sequence identity with rat and human CTLA-4, respectively.