

Human PSMA/FOLH1/NAALADase I Alexa Fluor® 700-conjugated Antibody

Monoclonal Mouse IgG_{2A} Clone # 460420

Catalog Number: FAB4234N

100 µg

DESCRIPTION

Species Reactivity	Human
Specificity	Detects human PSMA/FOLH1/NAALADase I in direct ELISAs and Western blots. In direct ELISAs, less than 10% cross-reactivity with recombinant human (rh) NAALADase-like 2 and no cross-reactivity with rhNAALADase-like 1, rhNAALADase-like 3, recombinant mouse (rm) PSMA/FOLH1/NAALADase I, or rmNAALADase-like 2 is observed.
Source	Monoclonal Mouse IgG _{2A} Clone # 460420
Purification	Protein A or G purified from hybridoma culture supernatant
Immunogen	Chinese hamster ovary cell line CHO-derived recombinant human PSMA/FOLH1/NAALADase I Lys44-Ala750 Accession # Q04609
Conjugate	Alexa Fluor 700 Excitation Wavelength: 675-700 nm Emission Wavelength: 723 nm
Formulation	Supplied 0.2 mg/mL in a saline solution containing BSA and Sodium Azide. See Certificate of Analysis for details. *Contains <0.1% Sodium Azide, which is not hazardous at this concentration according to GHS classifications. Refer to the Safety Data Sheet (SDS) for additional information and handling instructions.

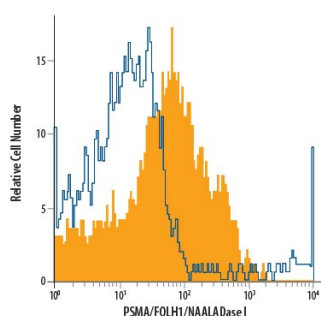
APPLICATIONS

Please Note: Optimal dilutions should be determined by each laboratory for each application. [General Protocols](#) are available in the Technical Information section on our website.

	Recommended Concentration	Sample
Flow Cytometry	0.25-1 µg/10 ⁶ cells	See Below

DATA

Flow Cytometry



Detection of PSMA/FOLH1/NAALADase I in LNCaP Human Cell Line by Flow Cytometry. LNCaP human prostate cancer cell line was stained with Mouse Anti-Human PSMA/FOLH1/NAALADase I Alexa Fluor® 700-conjugated Monoclonal Antibody (Catalog # FAB4234N, filled histogram) or isotype control antibody (Catalog # IC003N, open histogram). View our protocol for [Staining Membrane-associated Proteins](#).

PREPARATION AND STORAGE

Shipping	The product is shipped with polar packs. Upon receipt, store it immediately at the temperature recommended below.
Stability & Storage	Protect from light. Do not freeze. <ul style="list-style-type: none"> 12 months from date of receipt, 2 to 8 °C as supplied.

BACKGROUND

Human prostate-specific membrane antigen (PSMA), a tumor marker in prostate cancer encoded by the FOLH1 gene, is a type II transmembrane zinc metallopeptidase that is most highly expressed in the nervous system, prostate, kidney, and small intestine (1, 2). The enzyme is also known as glutamate carboxypeptidase II (GCPII), folate hydrolase 1, folypoly-gamma-glutamate carboxypeptidase (FGCP), and N-acetylated-alpha-linked acidic dipeptidase I (NAALADase I). In the brain, PSMA hydrolyzes the neurotransmitter N-acetyl-Asp-Glu to produce glutamate, another neurotransmitter. Inhibition of brain PSMA activity is considered to be a promising approach for the treatment of neurological disorders associated with glutamate excitotoxicity, such as stroke, chronic pain, and amyotrophic lateral sclerosis (3). Intestinal PSMA hydrolyzes folypoly-g-glutamates, facilitating the uptake of folate (4).

References:

1. Silver, D.A. *et al.* (1997) Clin. Cancer Res. **3**:81.
2. Carter, R.E. *et al.* (1996) Pro. Natl. Acad. Sci. USA. **93**:749.
3. Jackson, P.F. and Slusher, B.S. (2001) Curr. Med. Chem. **8**:949.
4. Heston, W.D. (1997) Urology **49**:104.

Human PSMA/FOLH1/NAALADase I Alexa Fluor® 700-conjugated Antibody

Monoclonal Mouse IgG_{2A} Clone # 460420

Catalog Number: FAB4234N

100 µg

PRODUCT SPECIFIC NOTICES

This product is provided under an agreement between Life Technologies Corporation and R&D Systems, Inc, and the manufacture, use, sale or import of this product is subject to one or more US patents and corresponding non-US equivalents, owned by Life Technologies Corporation and its affiliates. The purchase of this product conveys to the buyer the non-transferable right to use the purchased amount of the product and components of the product only in research conducted by the buyer (whether the buyer is an academic or for-profit entity). The sale of this product is expressly conditioned on the buyer not using the product or its components (1) in manufacturing; (2) to provide a service, information, or data to an unaffiliated third party for payment; (3) for therapeutic, diagnostic or prophylactic purposes; (4) to resell, sell, or otherwise transfer this product or its components to any third party, or for any other commercial purpose. Life Technologies Corporation will not assert a claim against the buyer of the infringement of the above patents based on the manufacture, use or sale of a commercial product developed in research by the buyer in which this product or its components was employed, provided that neither this product nor any of its components was used in the manufacture of such product. For information on purchasing a license to this product for purposes other than research, contact Life Technologies Corporation, Cell Analysis Business Unit, Business Development, 29851 Willow Creek Road, Eugene, OR 97402, Tel: (541) 465-8300. Fax: (541) 335-0354.