

## DESCRIPTION

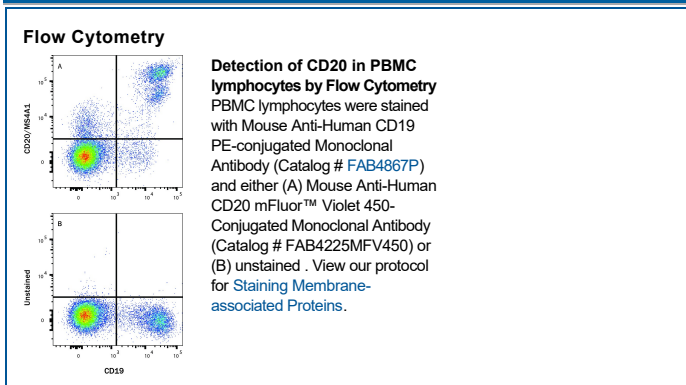
<b>Species Reactivity</b>	Human
<b>Specificity</b>	Detects human CD20. Stains human CD20 transfectants but not irrelevant transfectants.
<b>Source</b>	Monoclonal Mouse IgG <sub>1</sub> Clone # 396444
<b>Purification</b>	Protein A or G purified from hybridoma culture supernatant
<b>Immunogen</b>	NS0 mouse myeloma cell line transfected with human CD20 Met1-Pro297 Accession # P11836
<b>Conjugate</b>	mFluor™ Violet 450 Excitation Wavelength: 406 nm Emission Wavelength: 445 nm
<b>Formulation</b>	Supplied in a saline solution containing BSA and Sodium Azide. See Certificate of Analysis for details.  *Contains <0.1% Sodium Azide, which is not hazardous at this concentration according to GHS classifications. Refer to the Safety Data Sheet (SDS) for additional information and handling instructions.

## APPLICATIONS

**Please Note:** Optimal dilutions should be determined by each laboratory for each application. [General Protocols](#) are available in the Technical Information section on our website.

	<b>Recommended Concentration</b>	<b>Sample</b>
<b>Flow Cytometry</b>	0.1-1 µg/10 <sup>6</sup> cells	PBMC lymphocytes

## DATA



## PREPARATION AND STORAGE

<b>Shipping</b>	The product is shipped with polar packs. Upon receipt, store it immediately at the temperature recommended below.
<b>Stability &amp; Storage</b>	<b>Do not freeze.</b> <ul style="list-style-type: none"> <li>12 months from date of receipt, 2 to 8 °C as supplied.</li> </ul>

## BACKGROUND

CD20 is a 297 amino acid (aa) non-glycosylated type III membrane protein that is the founding member of the MS4A tetraspanin protein family. It is expressed on pre-B, naïve and mature B lymphocytes and B-cell lymphomas. CD20 is associated with lipid rafts upon crosslinking, and appears to play a role in regulation of ion influx. The one extracellular segment of 48 aa shows 65% aa sequence identity between human and mouse CD20.

## PRODUCT SPECIFIC NOTICES

mFluor™ is a trademark of AAT Bioquest, Inc.