

## DESCRIPTION

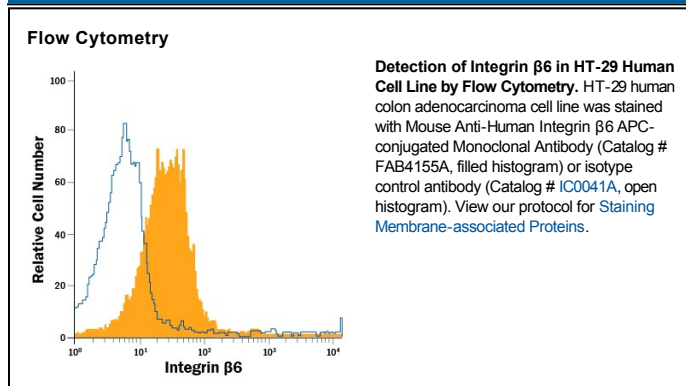
<b>Species Reactivity</b>	Human
<b>Specificity</b>	Detects human Integrin $\beta 6$ in direct ELISAs.
<b>Source</b>	Monoclonal Mouse IgG <sub>2B</sub> Clone # 437211
<b>Purification</b>	Protein A or G purified from hybridoma culture supernatant
<b>Immunogen</b>	Chinese hamster ovary cell line CHO-derived recombinant human Integrin $\alpha V\beta 6$ Phe31-Val992 (Integrin $\alpha V$ ) and Gly22-Asn707 (Integrin $\beta 6$ ) Accession # P18564 (Integrin $\beta 6$ )
<b>Conjugate</b>	Allophycocyanin Excitation Wavelength: 620-650 nm Emission Wavelength: 660-670 nm
<b>Formulation</b>	Supplied in a saline solution containing BSA and Sodium Azide. See Certificate of Analysis for details.  *Contains <0.1% Sodium Azide, which is not hazardous at this concentration according to GHS classifications. Refer to the Safety Data Sheet (SDS) for additional information and handling instructions.

## APPLICATIONS

**Please Note:** Optimal dilutions should be determined by each laboratory for each application. *General Protocols* are available in the *Technical Information* section on our website.

	Recommended Concentration	Sample
<b>Flow Cytometry</b>	10 $\mu$ L/10 <sup>6</sup> cells	See Below

## DATA



## PREPARATION AND STORAGE

<b>Shipping</b>	The product is shipped with polar packs. Upon receipt, store it immediately at the temperature recommended below.
<b>Stability &amp; Storage</b>	<b>Protect from light. Do not freeze.</b> <ul style="list-style-type: none"> <li>12 months from date of receipt, 2 to 8 °C as supplied.</li> </ul>

## BACKGROUND

Integrin  $\beta 6$  (ITG $\beta 6$ ) is a 95 kDa member of the Integrin beta family. It forms noncovalent heterodimers with Integrin  $\alpha V$  and appears on epithelia following injury or inflammation. It activates TGF- $\beta$  and assists keratinocyte migration. Human Integrin  $\beta 6$  is a type I transmembrane glycoprotein that is 767 amino acids (aa) in length. It contains a 688 aa extracellular domain (ECD) (aa 22-709) that incorporates a 241 aa VWF-A domain. Over aa 22-707, human integrin  $\beta 6$  ECD shares 90% and 93% aa sequence identity with mouse and pig integrin  $\beta 6$  ECD, respectively.