

## DESCRIPTION

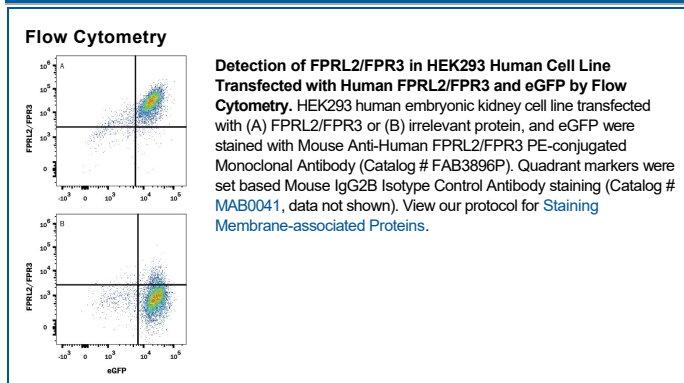
<b>Species Reactivity</b>	Human
<b>Specificity</b>	Detects human FPRL2. Stains human FPRL2 transfectants but not irrelevant transfectants.
<b>Source</b>	Monoclonal Mouse IgG <sub>2B</sub> Clone # 374822
<b>Purification</b>	Protein A or G purified from hybridoma culture supernatant
<b>Immunogen</b>	HEK293 human embryonic kidney cell line transfected with human FPRL2 Met1-Met352 Accession # P25089
<b>Conjugate</b>	Phycoerythrin Excitation Wavelength: 488 nm Emission Wavelength: 565-605 nm
<b>Formulation</b>	Supplied in a saline solution containing BSA and Sodium Azide. See Certificate of Analysis for details.  *Contains <0.1% Sodium Azide, which is not hazardous at this concentration according to GHS classifications. Refer to the Safety Data Sheet (SDS) for additional information and handling instructions.

## APPLICATIONS

**Please Note:** Optimal dilutions should be determined by each laboratory for each application. [General Protocols](#) are available in the Technical Information section on our website.

	Recommended Concentration	Sample
<b>Flow Cytometry</b>	10 $\mu$ L/10 <sup>6</sup> cells	See Below

## DATA



## PREPARATION AND STORAGE

<b>Shipping</b>	The product is shipped at ambient temperature. Upon receipt, store it immediately at the temperature recommended below.
<b>Stability &amp; Storage</b>	<b>Protect from light. Do not freeze.</b> <ul style="list-style-type: none"> <li>12 months from date of receipt, 2 to 8 °C as supplied.</li> </ul>

## BACKGROUND

FPRL2, also known as FMLP receptor-like 2, is a 40 kDa 7TM protein that is expressed on monocytes and dendritic cells. It interacts with formyl and acetyl peptides to attract these cells to sites of infection. FPRL2 signaling also inhibits DC maturation. Human FPRL2 shares 63% and 62% amino acid sequence identity with mouse and rat FPRL2, respectively.