

DESCRIPTION

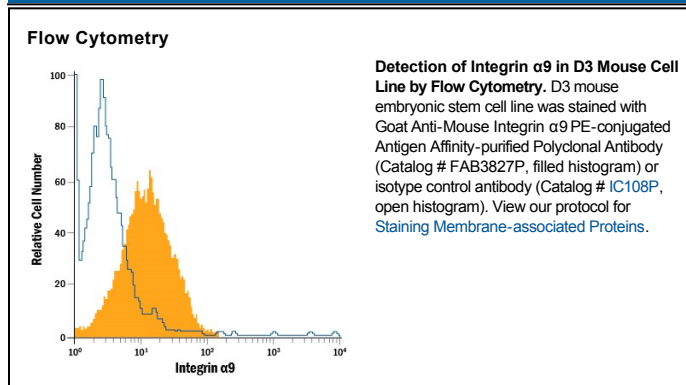
Species Reactivity	Mouse
Specificity	Detects mouse Integrin $\alpha 9$ in direct ELISAs and Western blots. In direct ELISAs and Western blots, less than 5% cross-reactivity with recombinant human Integrin $\alpha 1$, $\alpha 8$, $\alpha 9$, αL , recombinant mouse Integrin 3, 4, 5, E, and M is observed.
Source	Polyclonal Goat IgG
Purification	Antigen Affinity-purified
Immunogen	Mouse myeloma cell line NS0-derived recombinant mouse Integrin $\alpha 9$ Try31-Val979 Accession # NP_598482
Conjugate	Phycoerythrin Excitation Wavelength: 488 nm Emission Wavelength: 565-605 nm
Formulation	Supplied in a saline solution containing BSA and Sodium Azide. See Certificate of Analysis for details. *Contains <0.1% Sodium Azide, which is not hazardous at this concentration according to GHS classifications. Refer to the Safety Data Sheet (SDS) for additional information and handling instructions.

APPLICATIONS

Please Note: Optimal dilutions should be determined by each laboratory for each application. *General Protocols* are available in the *Technical Information* section on our website.

	Recommended Concentration	Sample
Flow Cytometry	10 μ L/ 10^6 cells	See Below

DATA



PREPARATION AND STORAGE

Shipping	The product is shipped with polar packs. Upon receipt, store it immediately at the temperature recommended below.
Stability & Storage	Protect from light. Do not freeze. <ul style="list-style-type: none"> 12 months from date of receipt, 2 to 8 °C as supplied.

BACKGROUND

Integrin $\alpha 9$ is a 150 kDa type I transmembrane glycoprotein that is widely expressed and is found on smooth muscle, keratinocytes, skeletal muscle and hepatocytes. It principally associates with the $\beta 1$ Integrin. $\alpha 9\beta 1$ binds to VEGF-C, VEGF-D, and osteopontin. The 951 amino acid (aa) extracellular domain of mouse Integrin $\alpha 9$ contains three β -propeller repeats and multiple PheGly-GlyAlaPro repeats. A potential proteolytic cleavage site in human $\alpha 9$ ECD is absolutely conserved in mouse $\alpha 9$ ECD (Arg566-Val567). The ECD of mouse Integrin $\alpha 9$ shares 95% and 89% aa sequence identity to rat and human Integrin $\alpha 9$, respectively.