

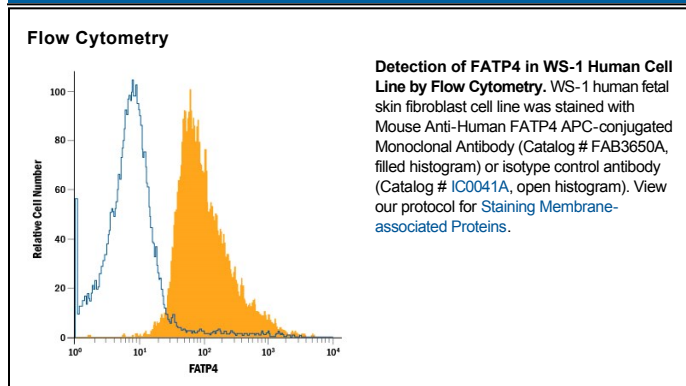
DESCRIPTION	
Species Reactivity	Human
Specificity	Detects human FATP4. Stains human FATP4-transfected cells but not irrelevant transfectants in flow cytometry.
Source	Monoclonal Mouse IgG _{2B} Clone # 342142
Purification	Protein A or G purified from hybridoma culture supernatant
Immunogen	NS0 mouse myeloma cell line transfected with human FATP4 Met1-Leu643 Accession # Q6P1M0
Conjugate	Allophycocyanin Excitation Wavelength: 620-650 nm Emission Wavelength: 660-670 nm
Formulation	Supplied in a saline solution containing BSA and Sodium Azide. See Certificate of Analysis for details. *Contains <0.1% Sodium Azide, which is not hazardous at this concentration according to GHS classifications. Refer to the Safety Data Sheet (SDS) for additional information and handling instructions.

APPLICATIONS

Please Note: Optimal dilutions should be determined by each laboratory for each application. *General Protocols* are available in the *Technical Information* section on our website.

	Recommended Concentration	Sample
Flow Cytometry	10 μ L/10 ⁶ cells	See Below

DATA



PREPARATION AND STORAGE

Shipping	The product is shipped with polar packs. Upon receipt, store it immediately at the temperature recommended below.
Stability & Storage	Protect from light. Do not freeze. <ul style="list-style-type: none"> 12 months from date of receipt, 2 to 8 °C as supplied.

BACKGROUND

FATP4 is a multipass transmembrane protein that participates in the uptake and metabolism of long chain fatty acids. FATP4 is predominantly expressed in the central nervous system, intestine, heart, liver, and pancreas. It has acyl-CoA synthase activity and contains an AMP-binding motif. Polymorphisms of FATP4 are associated with insulin resistance and related metabolic disorders. Human FATP4 shares 92% amino acid sequence identity with mouse FATP4.