

## DESCRIPTION

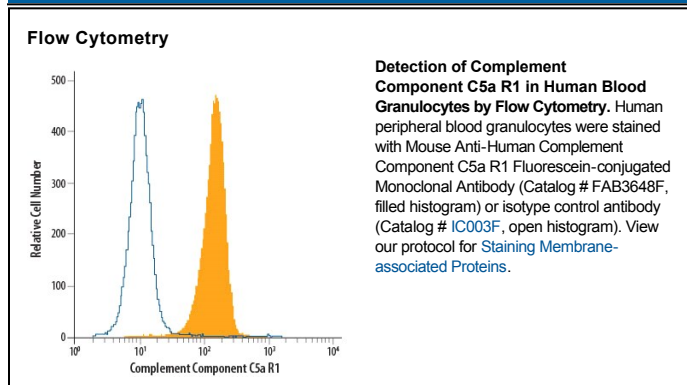
<b>Species Reactivity</b>	Human
<b>Specificity</b>	Detects human Complement Component C5a R1. Stains human Complement Component C5a R1 transfected cells but not irrelevant transfectants.
<b>Source</b>	Monoclonal Mouse IgG <sub>2A</sub> Clone # 347214
<b>Purification</b>	Protein A or G purified from hybridoma culture supernatant
<b>Immunogen</b>	NS0 mouse myeloma cell line transfected with human Complement Component C5a R1 Met1-Val350 Accession # P21730
<b>Conjugate</b>	Fluorescein Excitation Wavelength: 488 nm Emission Wavelength: 515-545 nm (FITC)
<b>Formulation</b>	Supplied in a saline solution containing BSA and Sodium Azide. See Certificate of Analysis for details.  *Contains <0.1% Sodium Azide, which is not hazardous at this concentration according to GHS classifications. Refer to the Safety Data Sheet (SDS) for additional information and handling instructions.

## APPLICATIONS

**Please Note:** Optimal dilutions should be determined by each laboratory for each application. *General Protocols* are available in the *Technical Information* section on our website.

	Recommended Concentration	Sample
<b>Flow Cytometry</b>	10 $\mu$ L/10 <sup>6</sup> cells	See Below

## DATA



## PREPARATION AND STORAGE

<b>Shipping</b>	The product is shipped with polar packs. Upon receipt, store it immediately at the temperature recommended below.
<b>Stability &amp; Storage</b>	<b>Protect from light. Do not freeze.</b> ● 12 months from date of receipt, 2 to 8 °C as supplied.

## BACKGROUND

Complement Component C5a R1 (C5aR1), also known as C5a ligand and CD88, is a 7TM protein expressed on myeloid, endothelial, epithelial, and smooth muscle cells. C5aR binds the activated complement anaphylatoxin C5a. In established allergic environments, this triggers neutrophil and eosinophil chemotaxis and the release of proinflammatory mediators. In contrast, C5aR1/C5a interactions are protective during allergen sensitization. Human C5aR1 shares 66% amino acid sequence identity with mouse and rat C5aR.