

DESCRIPTION

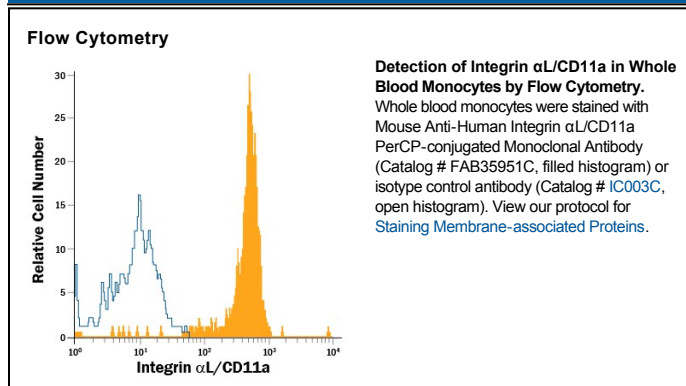
Species Reactivity	Human
Specificity	Detects human Integrin α L/CD11a in direct ELISAs. In direct ELISAs, no cross-reactivity with recombinant human (rh) Integrin α 1, α 2, α 3, α 4, α 5, α 6, α 8, α 9, α 10, α 11, α M, α V, α X, rhIntegrin β 3, rhIntegrin α 6(x1)+ β 4, α 7(x2)+ β 1, α D+ β 2, α E+ β 7, recombinant mouse Integrin α 2b or α L is observed.
Source	Monoclonal Mouse IgG _{2A} Clone # CR38
Purification	Protein A or G purified from hybridoma culture supernatant
Immunogen	Fibronectin purified human monocytes
Conjugate	PerCP (Peridinin-chlorophyll Protein Complex) Excitation Wavelength: 482 and 564 nm Emission Wavelength: 675 nm
Formulation	Supplied in a saline solution containing BSA and Sodium Azide. See Certificate of Analysis for details. *Contains <0.1% Sodium Azide, which is not hazardous at this concentration according to GHS classifications. Refer to the Safety Data Sheet (SDS) for additional information and handling instructions.

APPLICATIONS

Please Note: Optimal dilutions should be determined by each laboratory for each application. *General Protocols* are available in the *Technical Information* section on our website.

	Recommended Concentration	Sample
Flow Cytometry	10 μ L/10 ⁶ cells	See Below

DATA



PREPARATION AND STORAGE

Shipping	The product is shipped with polar packs. Upon receipt, store it immediately at the temperature recommended below.
Stability & Storage	Protect from light. Do not freeze. <ul style="list-style-type: none"> 12 months from date of receipt, 2 to 8 °C as supplied.

BACKGROUND

Integrin subunit α L/CD11a is a 180 kDa type I TM glycoprotein that interacts only with Integrin β 2/CD18 to form LFA-1, a leukocyte adhesion protein which binds endothelial cell ICAM. Human Integrin α L contains a 1064 aa extracellular domain (ECD), a 20 aa TM sequence and a 58 aa cytoplasmic domain. The ECD contains seven repeats that form a beta-propeller structure and one inserted vWA domain (I domain) containing a metal ion-dependent adhesion site (MIDAS). Human and mouse Integrin α L ECD share 74% aa identity. A second isoform has a 53 aa insert in the ECD.