

## DESCRIPTION

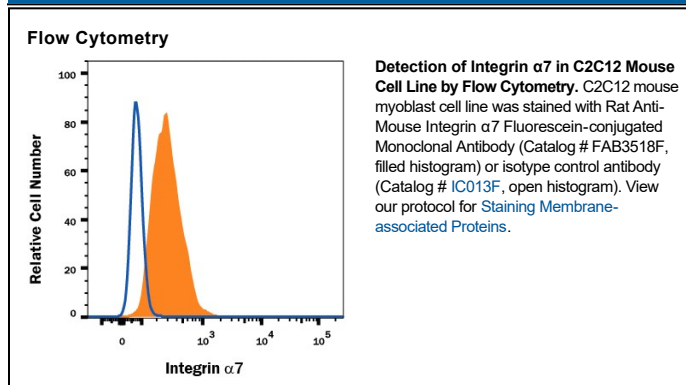
<b>Species Reactivity</b>	Mouse
<b>Specificity</b>	Detects mouse Integrin $\alpha 7$ in direct ELISAs. Reactivity with other Integrin $\alpha 7$ isoforms was not tested. In direct ELISAs, no cross-reactivity with recombinant mouse Integrin $\alpha 2$ , $\alpha 3$ , $\alpha 4$ , $\alpha 5$ , $\alpha 9$ , $\alpha E$ , $\alpha X$ , recombinant human Integrin $\alpha L$ , or $\alpha 11$ is observed.
<b>Source</b>	Monoclonal Rat IgG <sub>2B</sub> Clone # 334908
<b>Purification</b>	Protein A or G purified from hybridoma culture supernatant
<b>Immunogen</b>	Chinese hamster ovary cell line CHO-derived recombinant mouse Integrin $\alpha 7$ Phe34-Pro1036 Accession # NP_032424
<b>Conjugate</b>	Fluorescein Excitation Wavelength: 488 nm Emission Wavelength: 515-545 nm (FITC)
<b>Formulation</b>	Supplied in a saline solution containing BSA and Sodium Azide. See Certificate of Analysis for details.  *Contains <0.1% Sodium Azide, which is not hazardous at this concentration according to GHS classifications. Refer to the Safety Data Sheet (SDS) for additional information and handling instructions.

## APPLICATIONS

**Please Note:** Optimal dilutions should be determined by each laboratory for each application. *General Protocols* are available in the *Technical Information* section on our website.

	Recommended Concentration	Sample
<b>Flow Cytometry</b>	10 $\mu$ L/10 <sup>6</sup> cells	See Below

## DATA



## PREPARATION AND STORAGE

<b>Shipping</b>	The product is shipped with polar packs. Upon receipt, store it immediately at the temperature recommended below.
<b>Stability &amp; Storage</b>	<b>Protect from light. Do not freeze.</b> <ul style="list-style-type: none"> <li>● 12 months from date of receipt, 2 to 8 °C as supplied.</li> </ul>

## BACKGROUND

Integrin  $\alpha 7$  is a transmembrane glycoprotein that forms heterodimers with Integrin  $\beta 1$  to bind Laminin 1.