

DESCRIPTION

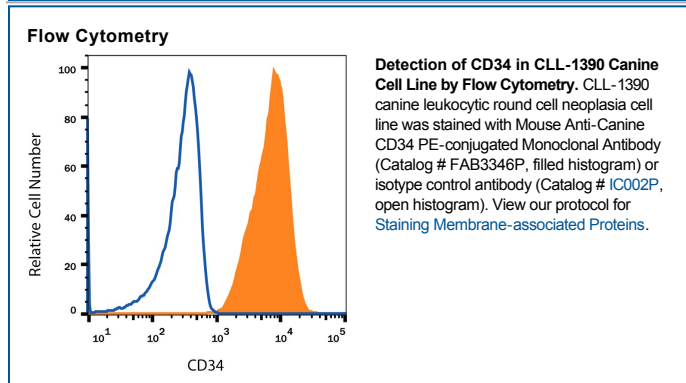
Species Reactivity	Canine
Specificity	Detects canine CD34 in Western blots.
Source	Monoclonal Mouse IgG ₁ Clone # 1H6
Purification	Protein A or G purified from hybridoma culture supernatant
Immunogen	COS-7 African green monkey SV40 transformed kidney fibroblast-like cell line-derived recombinant canine CD34
Conjugate	Phycoerythrin Excitation Wavelength: 488 nm Emission Wavelength: 565-605 nm
Formulation	Supplied in a saline solution containing BSA and Sodium Azide. See Certificate of Analysis for details. *Contains <0.1% Sodium Azide, which is not hazardous at this concentration according to GHS classifications. Refer to the Safety Data Sheet (SDS) for additional information and handling instructions.

APPLICATIONS

Please Note: Optimal dilutions should be determined by each laboratory for each application. *General Protocols* are available in the *Technical Information* section on our website.

	Recommended Concentration	Sample
Flow Cytometry	10 µL/10 ⁶ cells	See Below

DATA



PREPARATION AND STORAGE

Shipping	The product is shipped with polar packs. Upon receipt, store it immediately at the temperature recommended below.
Stability & Storage	Protect from light. Do not freeze. <ul style="list-style-type: none"> ● 12 months from date of receipt, 2 to 8 °C as supplied.

BACKGROUND

CD34 is a sialomucin molecule that is expressed on primitive hematopoietic stem cells and downregulated as they differentiate into mature cells. Although its precise function remains unknown, the pattern of expression of CD34 suggests that it plays a significant role in early hematopoiesis.