

DESCRIPTION

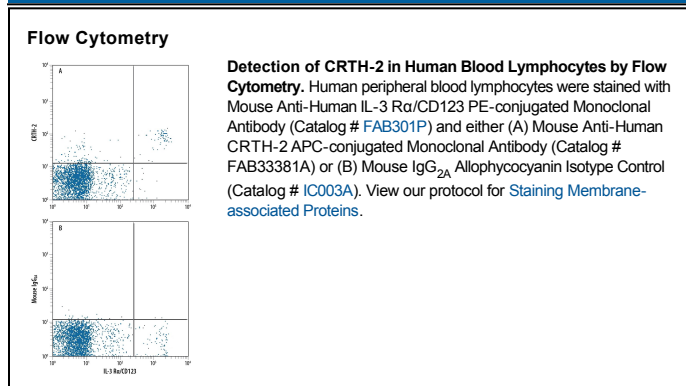
Species Reactivity	Human
Specificity	Detects human CRTH-2 in Cell-Based ELISA.
Source	Monoclonal Mouse IgG _{2A} Clone # 301109
Purification	Protein A or G purified from hybridoma culture supernatant
Immunogen	NS0 mouse myeloma cell line transfected with human CRTH-2 Met1-Ser395 Accession # Q9Y5Y4
Conjugate	Allophycocyanin Excitation Wavelength: 620-650 nm Emission Wavelength: 660-670 nm
Formulation	Supplied in a saline solution containing BSA and Sodium Azide. See Certificate of Analysis for details. *Contains <0.1% Sodium Azide, which is not hazardous at this concentration according to GHS classifications. Refer to the Safety Data Sheet (SDS) for additional information and handling instructions.

APPLICATIONS

Please Note: Optimal dilutions should be determined by each laboratory for each application. [General Protocols](#) are available in the [Technical Information](#) section on our website.

	Recommended Concentration	Sample
Flow Cytometry	10 μ L/10 ⁶ cells	See Below

DATA



PREPARATION AND STORAGE

Shipping	The product is shipped with polar packs. Upon receipt, store it immediately at the temperature recommended below.
Stability & Storage	Protect from light. Do not freeze. <ul style="list-style-type: none"> 12 months from date of receipt, 2 to 8 °C as supplied.

BACKGROUND

CRTH-2, also known as GPR44, is a 7TM G protein-coupled receptor that is expressed by activated Th2 cells and eosinophils. CRTH-2 binds Prostaglandin D2 and induces chemotaxis of these cells in allergic and inflammatory immune responses. Human and mouse CRTH-2 share 78% amino acid sequence identity.