

DESCRIPTION

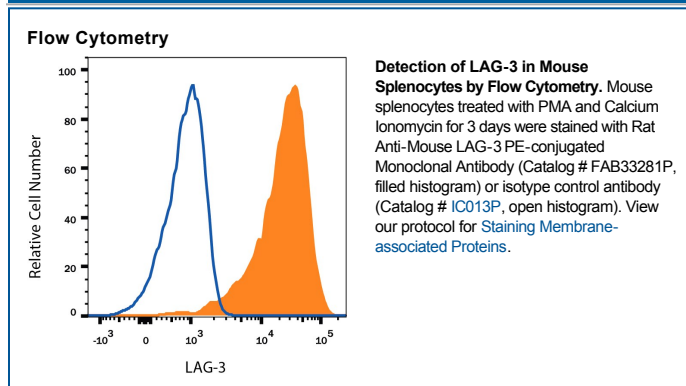
Species Reactivity	Mouse
Specificity	Detects mouse LAG-3 in direct ELISAs. In direct ELISAs, no cross-reactivity with recombinant human LAG-3 is observed.
Source	Monoclonal Rat IgG _{2B} Clone # 631501
Purification	Protein A or G purified from hybridoma culture supernatant
Immunogen	NS0 mouse myeloma cell line transfected with mouse LAG-3 Ser23-Leu442 Accession # Q61790
Conjugate	Phycoerythrin Excitation Wavelength: 488 nm Emission Wavelength: 565-605 nm
Formulation	Supplied in a saline solution containing BSA and Sodium Azide. See Certificate of Analysis for details. *Contains <0.1% Sodium Azide, which is not hazardous at this concentration according to GHS classifications. Refer to the Safety Data Sheet (SDS) for additional information and handling instructions.

APPLICATIONS

Please Note: Optimal dilutions should be determined by each laboratory for each application. *General Protocols* are available in the *Technical Information* section on our website.

	Recommended Concentration	Sample
Flow Cytometry	10 μ L/10 ⁶ cells	See Below

DATA



PREPARATION AND STORAGE

Shipping	The product is shipped with polar packs. Upon receipt, store it immediately at the temperature recommended below.
Stability & Storage	Protect from light. Do not freeze. <ul style="list-style-type: none"> 12 months from date of receipt, 2 to 8 °C as supplied.

BACKGROUND

LAG-3 (Lymphocyte activation gene-3; also known as CD223 in the human) is a member of the immunoglobulin superfamily (IgSF). The mature LAG-3 protein is a 496 amino acid (aa) membrane protein with a 421 aa extracellular region which contains four IgSF domains, a 21 aa transmembrane region and a 54 aa cytoplasmic region. LAG-3 shares < 20% amino acid sequence homology with CD4, but has similar structure and binds to MHC class II with higher affinity. The mouse LAG-3 extracellular region shares 69% aa sequence identity with human LAG-3.