

DESCRIPTION

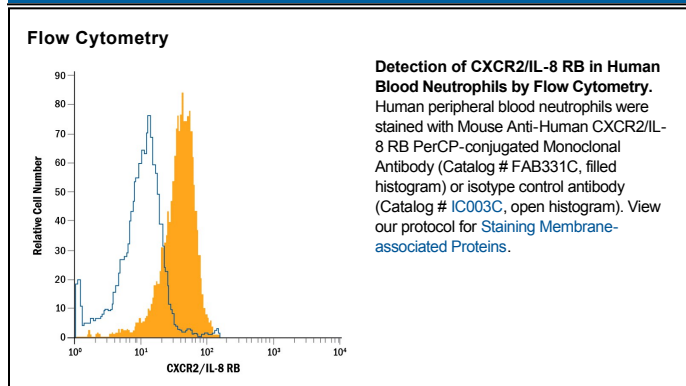
Species Reactivity	Human
Specificity	Detects human CXCR2/IL-8 RB transfected NS0 cells but not the parental cell line. It does not cross-react with CXCR1 (IL-8 RA).
Source	Monoclonal Mouse IgG _{2A} Clone # 48311
Purification	Protein A or G purified from ascites
Immunogen	NS0 mouse myeloma cell line transfected with human CXCR2/IL-8 RB Met1-Leu355 Accession # AAB25880
Conjugate	PerCP (Peridinin-chlorophyll Protein Complex) Excitation Wavelength: 482 and 564 nm Emission Wavelength: 675 nm
Formulation	Supplied in a saline solution containing BSA and Sodium Azide. See Certificate of Analysis for details. *Contains <0.1% Sodium Azide, which is not hazardous at this concentration according to GHS classifications. Refer to the Safety Data Sheet (SDS) for additional information and handling instructions.

APPLICATIONS

Please Note: Optimal dilutions should be determined by each laboratory for each application. *General Protocols* are available in the *Technical Information* section on our website.

	Recommended Concentration	Sample
Flow Cytometry	10 μ L/10 ⁶ cells	See Below

DATA



PREPARATION AND STORAGE

Shipping	The product is shipped with polar packs. Upon receipt, store it immediately at the temperature recommended below.
Stability & Storage	Protect from light. Do not freeze. <ul style="list-style-type: none"> 12 months from date of receipt, 2 to 8 °C as supplied.

BACKGROUND

CXCR2, also known as IL-8 RB, is a G protein-coupled chemokine receptor expressed on neutrophils. It binds IL-8, GRO α , GRO β , GRO γ , NAP-2, and ENA-78.