

## DESCRIPTION

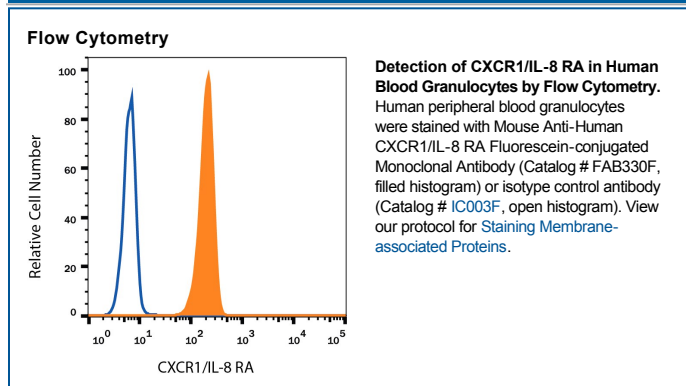
<b>Species Reactivity</b>	Human
<b>Specificity</b>	Detects human CXCR1/IL-8 RA transfectants but not the parental cell line. It does not cross-react with human CXCR2.
<b>Source</b>	Monoclonal Mouse IgG <sub>2A</sub> Clone # 42705
<b>Purification</b>	Protein A or G purified from hybridoma culture supernatant
<b>Immunogen</b>	NS0 mouse myeloma cell line transfected with human CXCR1/IL-8 RA Met1-Leu350 Accession # AAA59159
<b>Conjugate</b>	Fluorescein Excitation Wavelength: 488 nm Emission Wavelength: 515-545 nm (FITC)
<b>Formulation</b>	Supplied in a saline solution containing BSA and Sodium Azide. See Certificate of Analysis for details.  *Contains <0.1% Sodium Azide, which is not hazardous at this concentration according to GHS classifications. Refer to the Safety Data Sheet (SDS) for additional information and handling instructions.

## APPLICATIONS

**Please Note:** Optimal dilutions should be determined by each laboratory for each application. *General Protocols* are available in the *Technical Information* section on our website.

	Recommended Concentration	Sample
<b>Flow Cytometry</b>	10 $\mu$ L/10 <sup>6</sup> cells	See Below

## DATA



## PREPARATION AND STORAGE

<b>Shipping</b>	The product is shipped with polar packs. Upon receipt, store it immediately at the temperature recommended below.
<b>Stability &amp; Storage</b>	<b>Protect from light. Do not freeze.</b> <ul style="list-style-type: none"> <li>12 months from date of receipt, 2 to 8 °C as supplied.</li> </ul>

## BACKGROUND

The human C-X-C chemokine IL-8 is a potent neutrophil chemotactic and activating factor. Two distinct G protein-linked cell surface receptors, known as IL-8 RA (type I or CXCR1) and IL-8 RB (type II or CXCR2), can interact with the IL-8 molecule. These two receptors share 77% amino acid homology. CXCR1 expression has been documented on neutrophils, monocytes, and a small population of T cells.