

DESCRIPTION

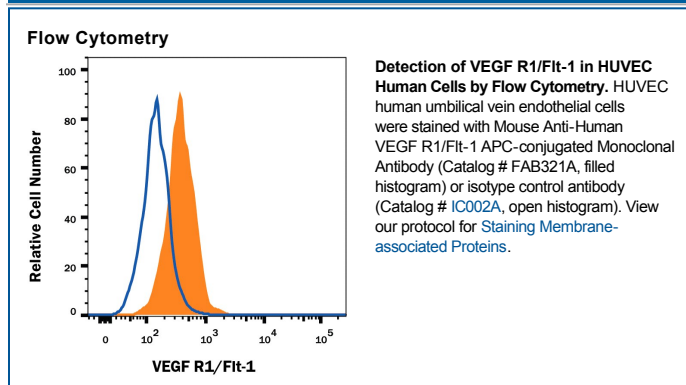
Species Reactivity	Human
Specificity	Detects human VEGF R1/Flt-1 in direct ELISAs and Western blots. In Western blots, this antibody does not cross-react with recombinant mouse VEGF R1, recombinant human (rh) VEGF R2, rhVEGF R3, or rhVEGF R4.
Source	Monoclonal Mouse IgG ₁ Clone # 49560
Purification	Protein A or G purified from hybridoma culture supernatant
Immunogen	<i>S. frugiperda</i> insect ovarian cell line Sf 21-derived recombinant human VEGF R1/Flt-1 Ser27-His687 Accession # NP_001153392
Conjugate	Allophycocyanin Excitation Wavelength: 620-650 nm Emission Wavelength: 660-670 nm
Formulation	Supplied in a saline solution containing BSA and Sodium Azide. See Certificate of Analysis for details. *Contains <0.1% Sodium Azide, which is not hazardous at this concentration according to GHS classifications. Refer to the Safety Data Sheet (SDS) for additional information and handling instructions.

APPLICATIONS

Please Note: Optimal dilutions should be determined by each laboratory for each application. *General Protocols* are available in the *Technical Information* section on our website.

	Recommended Concentration	Sample
Flow Cytometry	10 μ L/10 ⁶ cells	See Below

DATA



PREPARATION AND STORAGE

Shipping	The product is shipped with polar packs. Upon receipt, store it immediately at the temperature recommended below.
Stability & Storage	Protect from light. Do not freeze. <ul style="list-style-type: none"> ● 12 months from date of receipt, 2 to 8 °C as supplied.

BACKGROUND

Vascular Endothelial Growth Factor Receptor 1 (VEGF R1) is a receptor tyrosine kinase that is expressed primarily on endothelial cells and plays a role in vasculogenesis and angiogenesis. A soluble variant of VEGF R1 was also reported to bind VEGF and PlGF with high affinity and function as a potent VEGF antagonist.