

DESCRIPTION

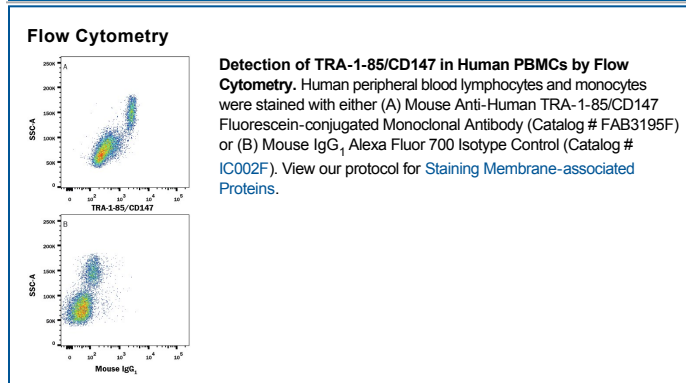
Species Reactivity	Human
Specificity	Detects human TRA-1-85 antigen in flow cytometry.
Source	Monoclonal Mouse IgG ₁ Clone # TRA-1-85
Purification	Protein A or G purified from hybridoma culture supernatant
Immunogen	2120Ep human embryonal carcinoma cell line
Conjugate	Fluorescein Excitation Wavelength: 488 nm Emission Wavelength: 515-545 nm (FITC)
Formulation	Supplied in a saline solution containing BSA and Sodium Azide. See Certificate of Analysis for details. *Contains <0.1% Sodium Azide, which is not hazardous at this concentration according to GHS classifications. Refer to the Safety Data Sheet (SDS) for additional information and handling instructions.

APPLICATIONS

Please Note: Optimal dilutions should be determined by each laboratory for each application. *General Protocols* are available in the *Technical Information* section on our website.

	Recommended Concentration	Sample
Flow Cytometry	10 μ L/10 ⁶ cells	See Below

DATA



PREPARATION AND STORAGE

Shipping	The product is shipped with polar packs. Upon receipt, store it immediately at the temperature recommended below.
Stability & Storage	Protect from light. Do not freeze. <ul style="list-style-type: none"> 12 months from date of receipt, 2 to 8 °C as supplied.

BACKGROUND

The TRA-1-85 antigen, also known as OKa blood group antigen, is a specific epitope within the protein known as Basigin, EMMPRIN and CD147. It is a cell surface determinant expressed on almost all human cell types. This antibody has been used in somatic cell hybrid studies to identify tissues of partial human origin (1, 2).

References:

- Williams, B.P. *et al.* (1988) Immunogenetics. **27**:322.
- Spring, F.A. *et al.* (1997) Eur. J. Immunol. **27**:891.