

## DESCRIPTION

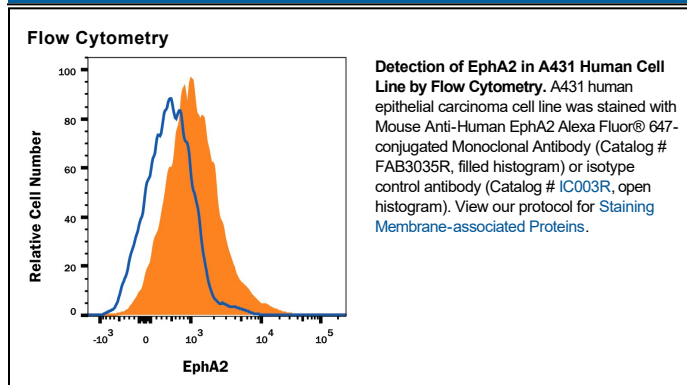
<b>Species Reactivity</b>	Human
<b>Specificity</b>	Detects human EphA2 in direct ELISAs and Western blots. In direct ELISAs, no cross-reactivity with recombinant mouse EphA4, A5, A6, A7, A8, or recombinant rat EphB1 is observed.
<b>Source</b>	Monoclonal Mouse IgG <sub>2A</sub> Clone # 371805
<b>Purification</b>	Protein A or G purified from hybridoma culture supernatant
<b>Immunogen</b>	Mouse myeloma cell line NS0-derived recombinant human EphA2 Gln25-Asn534 Accession # P29317
<b>Conjugate</b>	Alexa Fluor 647 Excitation Wavelength: 650 nm Emission Wavelength: 668 nm
<b>Formulation</b>	Supplied 0.2 mg/mL in a saline solution containing BSA and Sodium Azide. See Certificate of Analysis for details.  *Contains <0.1% Sodium Azide, which is not hazardous at this concentration according to GHS classifications. Refer to the Safety Data Sheet (SDS) for additional information and handling instructions.

## APPLICATIONS

**Please Note:** Optimal dilutions should be determined by each laboratory for each application. *General Protocols* are available in the *Technical Information* section on our website.

	Recommended Concentration	Sample
<b>Flow Cytometry</b>	0.25-1 µg/10 <sup>6</sup> cells	See Below

## DATA



## PREPARATION AND STORAGE

<b>Shipping</b>	The product is shipped with polar packs. Upon receipt, store it immediately at the temperature recommended below.
<b>Stability &amp; Storage</b>	<b>Protect from light. Do not freeze.</b> <ul style="list-style-type: none"> <li>● 12 months from date of receipt, 2 to 8 °C as supplied.</li> </ul>

#### BACKGROUND

EphA2, also known as Eck, Myk2, and Sek2, is a member of the Eph receptor tyrosine kinase family which binds Ephrins A1, 2, 3, 4, and 5 (1, 2, 3, 4). A and B class Eph proteins have a common structural organization. The human EphA2 cDNA encodes a 976 amino acid (aa) precursor including a 24 aa signal sequence, a 510 aa extracellular domain (ECD), a 24 aa transmembrane segment, and a 418 aa cytoplasmic domain. The ECD contains an N-terminal globular domain, a cysteine-rich domain, and two fibronectin type III domains (5). The cytoplasmic domain contains a juxtamembrane motif with two tyrosine residues, which are the major autophosphorylation sites, a kinase domain, and a sterile alpha motif (SAM) (5). The ECD of human EphA2 shares 90-94% aa sequence identity with mouse, bovine, and canine EphA2, and approximately 45% aa sequence identity with human EphA1, 3, 4, 5, 7, and 8. EphA2 becomes autophosphorylated following ligand binding (6, 7) and then interacts with SH2 domain-containing PI3-kinase to activate MAPK pathways (8, 9). Reverse signaling is also propagated through the Ephrin ligand. Transcription of EphA2 is dependent on the expression of E-Cadherin (10), and can be induced by p53 family transcription factors (11). EphA2 is upregulated in breast, prostate, and colon cancer vascular endothelium. Its ligand, EphrinA1, is expressed by the local tumor cells (12, 13). In some cases, EphA2 and EphrinA1 are expressed on the same blood vessels (14). EphA2 signaling cooperates with VEGF receptor signaling in promoting endothelial cell migration (13). The gene encoding human EphA2 maps to a region on chromosome 1 which is frequently deleted in neuroectodermal tumors (15).

#### References:

1. Poliakov, A. *et al.* (2004) *Dev. Cell* **7**:465.
2. Surawska, H. *et al.* (2004) *Cytokine Growth Factor Rev.* **15**:419.
3. Pasquale, E.B. (2005) *Nat. Rev. Mol. Cell Biol.* **6**:462.
4. Davy, A. and P. Soriano (2005) *Dev. Dyn.* **232**:1.
5. Bohme, B *et al.* (1993) *Oncogene* **8**:2857.
6. Pandey, A. *et al.* (1995) *Science* **268**:567.
7. Bartley, T.D. *et al.* (1994) *Nature* **368**:558.
8. Pandey, A. *et al.* (1994) *J. Biol. Chem.* **269**:30154.
9. Miao, H. *et al.* (2001) *Nat. Cell Biol.* **3**:527.
10. Orsulic, S. and R. Kemler (2000) *J. Cell Sci.* **113**:1793.
11. Dohn, M. *et al.* (2001) *Oncogene* **20**:6503.
12. Zelinski, D.P. *et al.* (2001) *Cancer Res.* **61**:2301.
13. Brantley, D.M. *et al.* (2002) *Oncogene* **21**:7011.
14. Ogawa, K. *et al.* (2000) *Oncogene* **19**:6043.
15. Sulman, E.P. *et al.* (1997) *Genomics* **40**:371.

#### PRODUCT SPECIFIC NOTICES

This product is provided under an agreement between Life Technologies Corporation and R&D Systems, Inc, and the manufacture, use, sale or import of this product is subject to one or more US patents and corresponding non-US equivalents, owned by Life Technologies Corporation and its affiliates. The purchase of this product conveys to the buyer the non-transferable right to use the purchased amount of the product and components of the product only in research conducted by the buyer (whether the buyer is an academic or for-profit entity). The sale of this product is expressly conditioned on the buyer not using the product or its components (1) in manufacturing; (2) to provide a service, information, or data to an unaffiliated third party for payment; (3) for therapeutic, diagnostic or prophylactic purposes; (4) to resell, sell, or otherwise transfer this product or its components to any third party, or for any other commercial purpose. Life Technologies Corporation will not assert a claim against the buyer of the infringement of the above patents based on the manufacture, use or sale of a commercial product developed in research by the buyer in which this product or its components was employed, provided that neither this product nor any of its components was used in the manufacture of such product. For information on purchasing a license to this product for purposes other than research, contact Life Technologies Corporation, Cell Analysis Business Unit, Business Development, 29851 Willow Creek Road, Eugene, OR 97402, Tel: (541) 465-8300. Fax: (541) 335-0354.