

DESCRIPTION

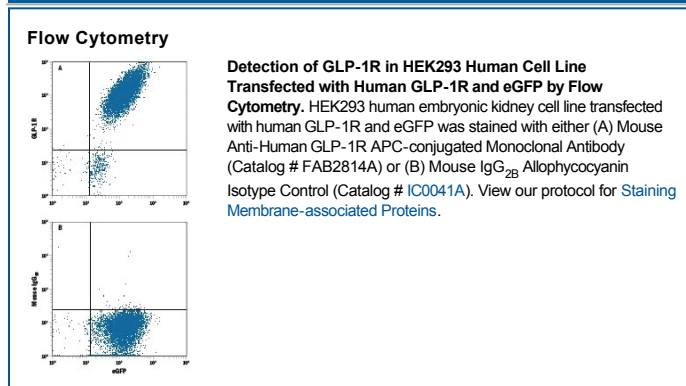
Species Reactivity	Human
Specificity	Stains human GLP-1R transfectants but not irrelevant transfectants in flow cytometry.
Source	Monoclonal Mouse IgG _{2B} Clone # 197920
Purification	Protein A or G purified from hybridoma culture supernatant
Immunogen	NS0 mouse myeloma cell line transfected with human GLP-1R Arg24-Ser463 Accession # NP_002053
Conjugate	Allophycocyanin Excitation Wavelength: 620-650 nm Emission Wavelength: 660-670 nm
Formulation	Supplied in a saline solution containing BSA and Sodium Azide. See Certificate of Analysis for details. *Contains <0.1% Sodium Azide, which is not hazardous at this concentration according to GHS classifications. Refer to the Safety Data Sheet (SDS) for additional information and handling instructions.

APPLICATIONS

Please Note: Optimal dilutions should be determined by each laboratory for each application. *General Protocols* are available in the *Technical Information* section on our website.

	Recommended Concentration	Sample
Flow Cytometry	10 µL/10 ⁶ cells	See Below

DATA



PREPARATION AND STORAGE

Shipping	The product is shipped with polar packs. Upon receipt, store it immediately at the temperature recommended below.
Stability & Storage	Protect from light. Do not freeze. <ul style="list-style-type: none"> 12 months from date of receipt, 2 to 8 °C as supplied.

BACKGROUND

GLP-1R is a class BG protein-linked seven transmembrane domain protein that is expressed in pancreas, lung, heart, kidney, hypothalamus, and stomach. GLP-1R functions as a receptor for glucagon-like peptide 1 and regulates insulin and glucagon production.