

## DESCRIPTION

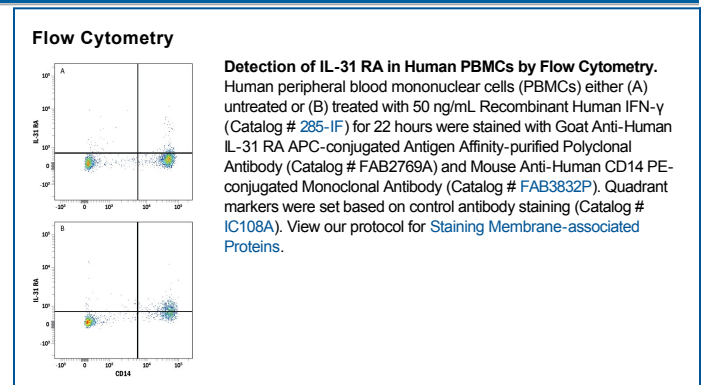
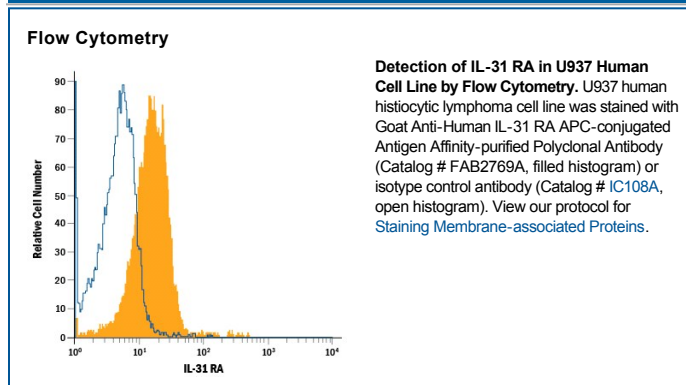
<b>Species Reactivity</b>	Human
<b>Specificity</b>	Detects human IL-31 RA in direct ELISAs and Western blots. In direct ELISAs, approximately 5% cross-reactivity with recombinant mouse IL-31 RA is observed.
<b>Source</b>	Polyclonal Goat IgG
<b>Purification</b>	Antigen Affinity-purified
<b>Immunogen</b>	Mouse myeloma cell line NS0-derived recombinant human IL-31 RA Ala20-Ser516 Accession # Q8NI17
<b>Conjugate</b>	Allophycocyanin Excitation Wavelength: 620-650 nm Emission Wavelength: 660-670 nm
<b>Formulation</b>	Supplied in a saline solution containing BSA and Sodium Azide. See Certificate of Analysis for details.  *Contains <0.1% Sodium Azide, which is not hazardous at this concentration according to GHS classifications. Refer to the Safety Data Sheet (SDS) for additional information and handling instructions.

## APPLICATIONS

**Please Note:** Optimal dilutions should be determined by each laboratory for each application. *General Protocols* are available in the *Technical Information* section on our website.

	<b>Recommended Concentration</b>	<b>Sample</b>
<b>Flow Cytometry</b>	10 $\mu$ L/10 <sup>6</sup> cells	See Below

## DATA



## PREPARATION AND STORAGE

<b>Shipping</b>	The product is shipped with polar packs. Upon receipt, store it immediately at the temperature recommended below.
<b>Stability &amp; Storage</b>	<b>Protect from light. Do not freeze.</b> <ul style="list-style-type: none"> <li>12 months from date of receipt, 2 to 8 °C as supplied.</li> </ul>

**BACKGROUND**

The interleukin-31 receptor A subunit (IL-31 RA), also known as gp130-Like Monocyte Receptor (GLM-R or GPL), is a ~100 kDa type I transmembrane glycoprotein that is classified as being a type I cytokine receptor (1, 2). A heterodimeric complex of IL-31 RA and the oncostatin M receptor (OSM-R) functions as the signaling receptor for IL-31 (3). Both subunits are inducibly expressed throughout the myelomonocytic lineage and are upregulated by interferon- $\gamma$  and bacterial lipopolysaccharides (1-3). IL-31 RA is also expressed on keratinocytes, dorsal root ganglia neurons, and variably on lung epithelial cells (3-6). The 732 amino acid (aa) IL-31 RA contains a 19 aa signal sequence, a 500 aa extracellular domain (ECD), a 21 aa transmembrane domain and a 192 aa cytoplasmic domain. The ECD shares 60%, 58%, 73% and 70% aa identity with mouse, rat, canine and bovine IL-31 RA ECD, respectively. Human IL-31 receptors do not respond to mouse IL-31 (7). The ECD contains five fibronectin type III domains; the first two contain four conserved cysteine residues and a WSXWS motif common to type I cytokine receptors (2). Twelve alternately spliced human IL-31 RA isoforms are known and range in size from 356-745 amino acids. A long (745 aa) and a short (560 aa) transmembrane form are the predominant forms, and many cell lines express both forms (8). The long form, like the 732 aa form, signals by recruiting STAT3, 5 or 1, while the short form does not recruit STATs and inhibits IL-31 signaling. The ratio of these forms and their co-expression with OSM-R determines a cell's response to IL-31 (8). In both humans and transgenic mice, IL-31 from skin-homing Th2 cells may contribute to the pruritis (itching) associated with nonatopic dermatitis, especially in infected skin (3, 9, 10).

**References:**

1. Ghilardi, N. *et al.* (2002) *J. Biol. Chem.* **277**:16831.
2. Diveu, C. *et al.* (2003) *J. Biol. Chem.* **278**:49850.
3. Dillon, S. R. *et al.* (2004) *Nat. Immunol.* **5**:752.
4. Chattopadhyay, S. *et al.* (2007) *J. Biol. Chem.* **282**:3014.
5. Perrigoue, J. G. *et al.* (2007) *J. Exp. Med.* **204**:481.
6. Bando, T. *et al.* (2006) *Neuroscience* **142**:1263.
7. Broxmeyer, H. E. *et al.* (2007) *Exp. Hematol.* **35**:78.
8. Diveu, C. *et al.* (2004) *Eur. Cytokine. Netw.* **15**:291.
9. Bilsborough, J. *et al.* (2006) *J. Allergy Clin. Immunol.* **117**:418.
10. Sonkoly, E. *et al.* (2006) *J. Allergy Clin. Immunol.* **117**:411.