

## DESCRIPTION

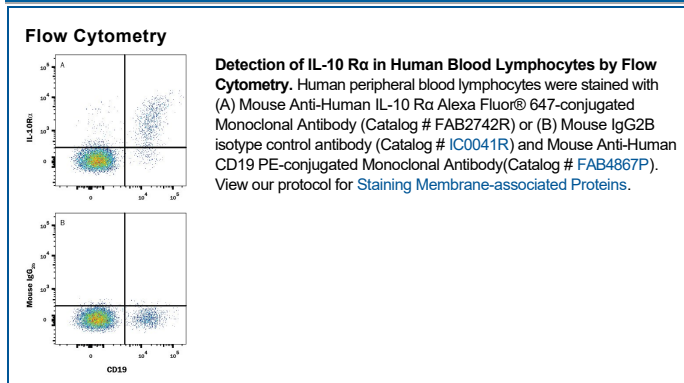
<b>Species Reactivity</b>	Human
<b>Specificity</b>	Detects human IL-10 R $\alpha$ in direct ELISAs and Western blots. In direct ELISAs, no cross-reactivity with recombinant mouse IL-10 R alpha or recombinant human (rh) IL-10 R beta is observed. In Western blots, no cross-reactivity with rhIL-10 R beta is observed.
<b>Source</b>	Monoclonal Mouse IgG <sub>2B</sub> Clone # 714212
<b>Purification</b>	Protein A or G purified from hybridoma culture supernatant
<b>Immunogen</b>	Mouse myeloma cell line NS0-derived and <i>S. frugiperda</i> insect ovarian cell line Sf 21-derived recombinant human IL-10 R $\alpha$ His22-Asn235 Accession # Q13651
<b>Conjugate</b>	Alexa Fluor 647 Excitation Wavelength: 650 nm Emission Wavelength: 668 nm
<b>Formulation</b>	Supplied in a saline solution containing BSA and Sodium Azide. See Certificate of Analysis for details.  *Contains <0.1% Sodium Azide, which is not hazardous at this concentration according to GHS classifications. Refer to the Safety Data Sheet (SDS) for additional information and handling instructions.

## APPLICATIONS

**Please Note:** Optimal dilutions should be determined by each laboratory for each application. *General Protocols* are available in the *Technical Information* section on our website.

	<b>Recommended Concentration</b>	<b>Sample</b>
<b>Flow Cytometry</b>	0.25-1 $\mu$ g/10 <sup>6</sup> cells	See Below

## DATA



## PREPARATION AND STORAGE

<b>Shipping</b>	The product is shipped with polar packs. Upon receipt, store it immediately at the temperature recommended below.
<b>Stability &amp; Storage</b>	<b>Protect from light. Do not freeze.</b> <ul style="list-style-type: none"> <li>12 months from date of receipt, 2 to 8 °C as supplied.</li> </ul>

## BACKGROUND

IL-10, initially designated cytokine synthesis inhibitory factor (CSIF), is a potent immunosuppressant of macrophage functions. IL-10 is also a pleiotropic cytokine with multiple immunostimulatory as well as immunosuppressive effects on a variety of other cell types. IL-10 binds specifically and with high affinity to cell-surface receptors. Mouse and human cDNA clones encoding the ligand-binding IL-10 receptor (IL-10 R) have been isolated. The IL-10 R mRNA has been detected in all cell types that are known to respond to IL-10. Human and mouse IL-10 receptors are structurally related to the IFN- $\gamma$  receptor. These receptors are members of the class II subgroup of the cytokine receptor superfamily. The deduced amino acid sequence of human IL-10 R is approximately 60% identical to mouse IL-10 R. Although human IL-10 has cross-species activities and is active on mouse cells, mouse IL-10 is species-specific in its actions and does not bind to the human IL-10 receptor. The human IL-10 R gene has been mapped to chromosome 11q23.3. Recombinant IL-10 soluble receptor, consisting of the extracellular domain of IL-10 R, binds IL-10 with high affinity in solution and is a potent IL-10 antagonist.

**PRODUCT SPECIFIC NOTICES**

This product is provided under an agreement between Life Technologies Corporation and R&D Systems, Inc, and the manufacture, use, sale or import of this product is subject to one or more US patents and corresponding non-US equivalents, owned by Life Technologies Corporation and its affiliates. The purchase of this product conveys to the buyer the non-transferable right to use the purchased amount of the product and components of the product only in research conducted by the buyer (whether the buyer is an academic or for-profit entity). The sale of this product is expressly conditioned on the buyer not using the product or its components (1) in manufacturing; (2) to provide a service, information, or data to an unaffiliated third party for payment; (3) for therapeutic, diagnostic or prophylactic purposes; (4) to resell, sell, or otherwise transfer this product or its components to any third party, or for any other commercial purpose. Life Technologies Corporation will not assert a claim against the buyer of the infringement of the above patents based on the manufacture, use or sale of a commercial product developed in research by the buyer in which this product or its components was employed, provided that neither this product nor any of its components was used in the manufacture of such product. For information on purchasing a license to this product for purposes other than research, contact Life Technologies Corporation, Cell Analysis Business Unit, Business Development, 29851 Willow Creek Road, Eugene, OR 97402, Tel: (541) 465-8300. Fax: (541) 335-0354.