

DESCRIPTION

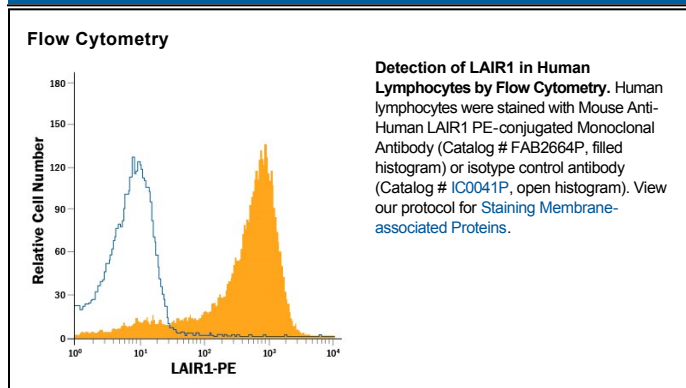
Species Reactivity	Human
Specificity	Detects human LAIR1 in direct ELISAs and Western blots. In direct ELISAs and Western blots, no cross-reactivity with recombinant human LAIR2 or recombinant mouse LAIR1 is observed.
Source	Monoclonal Mouse IgG _{2B} Clone # 342219
Purification	Protein A or G purified from hybridoma culture supernatant
Immunogen	Mouse myeloma cell line NS0-derived recombinant human LAIR1 isoform 1 Gln22-His163 Accession # Q6GTX8
Conjugate	Phycoerythrin Excitation Wavelength: 488 nm Emission Wavelength: 565-605 nm
Formulation	Supplied in a saline solution containing BSA and Sodium Azide. See Certificate of Analysis for details. *Contains <0.1% Sodium Azide, which is not hazardous at this concentration according to GHS classifications. Refer to the Safety Data Sheet (SDS) for additional information and handling instructions.

APPLICATIONS

Please Note: Optimal dilutions should be determined by each laboratory for each application. *General Protocols* are available in the *Technical Information* section on our website.

	Recommended Concentration	Sample
Flow Cytometry	10 μ L/10 ⁶ cells	See Below

DATA



PREPARATION AND STORAGE

Shipping	The product is shipped with polar packs. Upon receipt, store it immediately at the temperature recommended below.
Stability & Storage	Protect from light. Do not freeze. <ul style="list-style-type: none"> 12 months from date of receipt, 2 to 8 °C as supplied.

BACKGROUND

LAIR1 is an inhibitory receptor belonging to the Ig superfamily. It is a type I transmembrane protein with one extracellular Ig-like domain and two cytoplasmic ITIMs. Four LAIR1 splice variants exist. LAIR1b has a 17 aa deletion outside the Ig loop in the extracellular domain. It differs from LAIR1c by one amino acid (aa) residue. LAIR1d has a 77 aa truncation in the cytoplasmic domain. LAIR1 is expressed on NK cells, T cells, B cells, monocytes, dendritic cells and most thymocytes. The extracellular domain of human LAIR1 shares 40% aa sequence identity with that of the mouse ortholog.