

DESCRIPTION

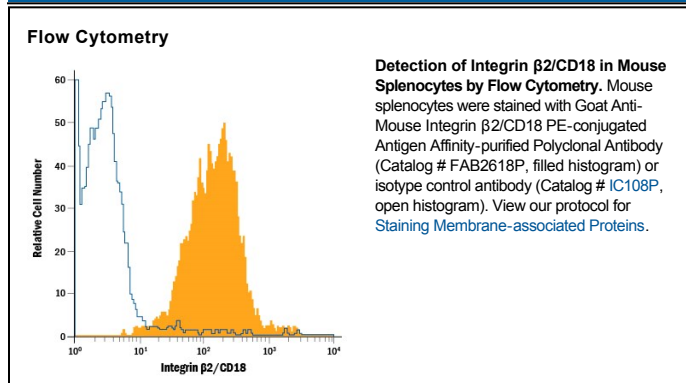
Species Reactivity	Mouse
Specificity	Detects mouse Integrin β 2 in direct ELISAs and Western blots. In direct ELISAs and Western blots, approximately 30% cross-reactivity with recombinant human Integrin β 2 and recombinant mouse (rm) Integrin β 6 is observed and less than 5% cross-reactivity with rmIntegrin β 1, rmIntegrin β 4, and rmIntegrin β 7 is observed.
Source	Polyclonal Goat IgG
Purification	Antigen Affinity-purified
Immunogen	Chinese hamster ovary cell line CHO-derived recombinant mouse Integrin β 2 Gln24-Asn702 Accession # P11835
Conjugate	Phycoerythrin Excitation Wavelength: 488 nm Emission Wavelength: 565-605 nm
Formulation	Supplied in a saline solution containing BSA and Sodium Azide. See Certificate of Analysis for details. *Contains <0.1% Sodium Azide, which is not hazardous at this concentration according to GHS classifications. Refer to the Safety Data Sheet (SDS) for additional information and handling instructions.

APPLICATIONS

Please Note: Optimal dilutions should be determined by each laboratory for each application. General Protocols are available in the Technical Information section on our website.

	Recommended Concentration	Sample
Flow Cytometry	10 μ L/10 ⁶ cells	See Below

DATA



PREPARATION AND STORAGE

Shipping	The product is shipped with polar packs. Upon receipt, store it immediately at the temperature recommended below.
Stability & Storage	Protect from light. Do not freeze. <ul style="list-style-type: none"> 12 months from date of receipt, 2 to 8 °C as supplied.

BACKGROUND

Integrin β 2 is a transmembrane protein expressed by all leukocytes. It occurs in heterodimeric complexes with Integrin subunits α D, α L (complex also known as LFA-1), α M (Mac-1), or α X (CR-4). These complexes are important in adhesion and leukocyte trafficking.