

DESCRIPTION

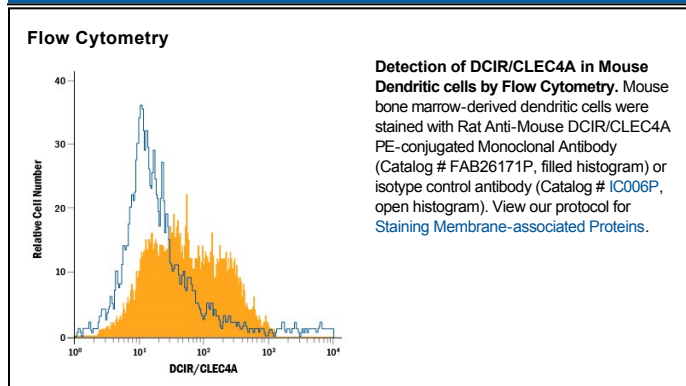
Species Reactivity	Mouse
Specificity	Detects mouse DCIR/CLEC4A in direct ELISAs.
Source	Monoclonal Rat IgG _{2A} Clone # 320507
Purification	Protein A or G purified from hybridoma culture supernatant
Immunogen	Mouse myeloma cell line NS0-derived recombinant mouse DCIR/CLEC4A isoform 1 Gln70-Leu238 Accession # Q9QZ15
Conjugate	Phycoerythrin Excitation Wavelength: 488 nm Emission Wavelength: 565-605 nm
Formulation	Supplied in a saline solution containing BSA and Sodium Azide. See Certificate of Analysis for details. *Contains <0.1% Sodium Azide, which is not hazardous at this concentration according to GHS classifications. Refer to the Safety Data Sheet (SDS) for additional information and handling instructions.

APPLICATIONS

Please Note: Optimal dilutions should be determined by each laboratory for each application. *General Protocols* are available in the *Technical Information* section on our website.

	Recommended Concentration	Sample
Flow Cytometry	10 μ L/10 ⁶ cells	See Below

DATA



PREPARATION AND STORAGE

Shipping	The product is shipped with polar packs. Upon receipt, store it immediately at the temperature recommended below.
Stability & Storage	Protect from light. Do not freeze. <ul style="list-style-type: none"> 12 months from date of receipt, 2 to 8 °C as supplied.

BACKGROUND

DCIR (Dendritic Cell Immunoreceptor), also known as LLIR (Lectin-Like Immunoreceptor), is a type II membrane protein belonging to the C-type lectin domain family and is designated CLEC4A (previously designated CLECSF6). Four transcript variants encoding distinct isoforms have been identified. DCIR contains one carbohydrate recognition domain in its C-terminal extracellular domain and an Immunoreceptor Tyrosine-based Inhibitory Motif (ITIM) in its cytoplasmic domain. Besides DC, DCIR is expressed on B cells, monocytes/macrophages and granulocytes.