

DESCRIPTION

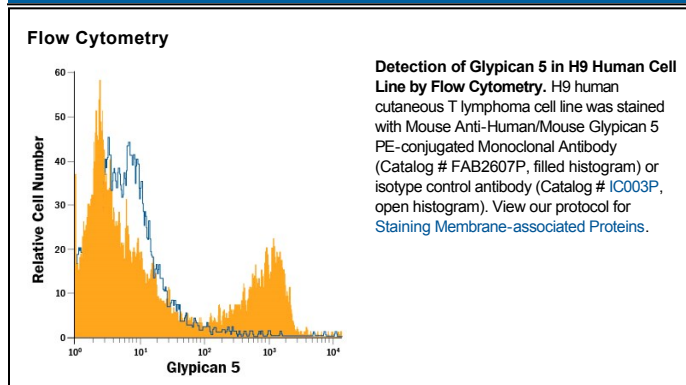
Species Reactivity	Human/Mouse
Specificity	Detects human and mouse Glypican 5 in direct ELISAs and Western blots. In direct ELISAs and Western blots, 100% cross-reactivity with recombinant mouse Glypican 5 is observed and no cross-reactivity with recombinant human Glypican 2, 3 or 6 is observed.
Source	Monoclonal Mouse IgG _{2A} Clone # 297716
Purification	Protein A or G purified from hybridoma culture supernatant
Immunogen	Mouse myeloma cell line NS0-derived recombinant human Glypican 5 Glu25-Thr554 Accession # P78333
Conjugate	Phycoerythrin Excitation Wavelength: 488 nm Emission Wavelength: 565-605 nm
Formulation	Supplied in a saline solution containing BSA and Sodium Azide. See Certificate of Analysis for details. *Contains <0.1% Sodium Azide, which is not hazardous at this concentration according to GHS classifications. Refer to the Safety Data Sheet (SDS) for additional information and handling instructions.

APPLICATIONS

Please Note: Optimal dilutions should be determined by each laboratory for each application. *General Protocols* are available in the *Technical Information* section on our website.

	Recommended Concentration	Sample
Flow Cytometry	10 μ L/10 ⁶ cells	See Below

DATA



PREPARATION AND STORAGE

Shipping	The product is shipped with polar packs. Upon receipt, store it immediately at the temperature recommended below.
Stability & Storage	Protect from light. Do not freeze. <ul style="list-style-type: none"> 12 months from date of receipt, 2 to 8 °C as supplied.

BACKGROUND

Glypican 5 (GPC5) belongs to the Glypican family of heparan sulfate proteoglycans that are linked to the cell surface through a glycosyl-phosphatidylinositol anchor. It is synthesized as a glycosylated core protein of 63-65 kDa size that is further modified by both heparan and chondroitin sulfate adducts to create a 150-170 kDa glycosaminoglycan (GAG). Glypican 5 is principally expressed in neurons or neuronal precursors. As such, one role for Glypican 5 is to act as a co-receptor for SHH where it promotes SHH:Patched/PTC-1 interaction through its sulfated GAGs. Over amino acids 25-554, human and mouse Glypican 5 share 87% amino acid sequence identity.