

DESCRIPTION

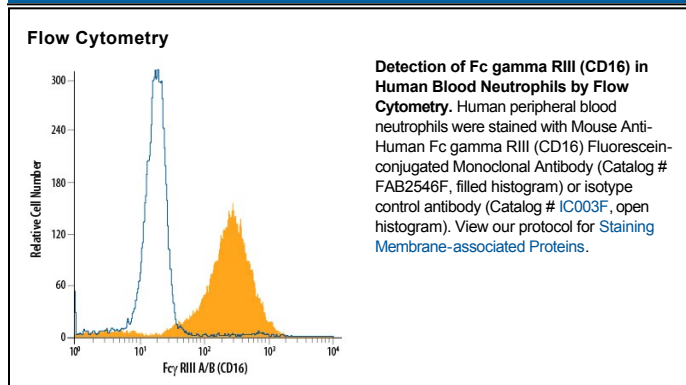
Species Reactivity	Human
Specificity	Detects human Fcγ RIIIA/B (CD16) in direct ELISAs. In direct ELISAs, approximately 10% cross-reactivity with recombinant human Fcγ RIIA and recombinant mouse Fcγ RIII is observed.
Source	Monoclonal Mouse IgG _{2A} Clone # 245536
Purification	Protein A or G purified from hybridoma culture supernatant
Immunogen	Mouse myeloma cell line NS0-derived recombinant human Fcγ RIIIA/B (CD16) Thr20-Gln208 Accession # O75015
Conjugate	Fluorescein Excitation Wavelength: 488 nm Emission Wavelength: 515-545 nm (FITC)
Formulation	Supplied in a saline solution containing BSA and Sodium Azide. See Certificate of Analysis for details. *Contains <0.1% Sodium Azide, which is not hazardous at this concentration according to GHS classifications. Refer to the Safety Data Sheet (SDS) for additional information and handling instructions.

APPLICATIONS

Please Note: Optimal dilutions should be determined by each laboratory for each application. *General Protocols* are available in the *Technical Information* section on our website.

	Recommended Concentration	Sample
Flow Cytometry	10 μL/10 ⁶ cells	See Below

DATA



PREPARATION AND STORAGE

Shipping	The product is shipped with polar packs. Upon receipt, store it immediately at the temperature recommended below.
Stability & Storage	Protect from light. Do not freeze. <ul style="list-style-type: none"> 12 months from date of receipt, 2 to 8 °C as supplied.

BACKGROUND

Fcγ RIIIA and B are low affinity receptors for polyvalent immune-complexed IgG. Fcγ RIIIA is a transmembrane activating receptor expressed by NK cells, T cells, monocytes, and macrophages. Fcγ RIIIB is a non-activating GPI-linked decoy receptor expressed on neutrophils and eosinophils.