

## DESCRIPTION

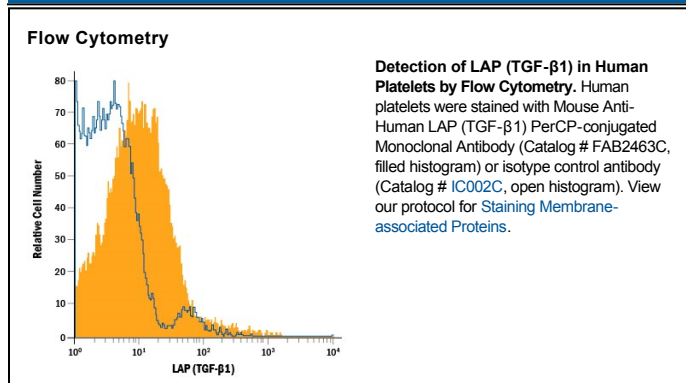
<b>Species Reactivity</b>	Human
<b>Specificity</b>	Detects human LAP (TGF-β1) in direct ELISAs. In direct ELISAs, this antibody does not cross-react with recombinant human (rh) TGF-β1, rhTGF-β2, rhTGF-β1.2, rhTGF-β3, or rhTGF-α.
<b>Source</b>	Monoclonal Mouse IgG <sub>1</sub> Clone # 27232
<b>Purification</b>	Protein A or G purified from hybridoma culture supernatant
<b>Immunogen</b>	<i>S. frugiperda</i> insect ovarian cell line Sf 21-derived recombinant human LAP (TGF-β1) Leu30-Arg278 (Cys33Ser) Accession # P01137
<b>Conjugate</b>	PerCP (Peridinin-chlorophyll Protein Complex) Excitation Wavelength: 482 and 564 nm Emission Wavelength: 675 nm
<b>Formulation</b>	Supplied in a saline solution containing BSA and Sodium Azide. See Certificate of Analysis for details.  *Contains <0.1% Sodium Azide, which is not hazardous at this concentration according to GHS classifications. Refer to the Safety Data Sheet (SDS) for additional information and handling instructions.

## APPLICATIONS

**Please Note:** Optimal dilutions should be determined by each laboratory for each application. *General Protocols* are available in the *Technical Information* section on our website.

	Recommended Concentration	Sample
<b>Flow Cytometry</b>	10 μL/10 <sup>6</sup> cells	See Below

## DATA



## PREPARATION AND STORAGE

<b>Shipping</b>	The product is shipped with polar packs. Upon receipt, store it immediately at the temperature recommended below.
<b>Stability &amp; Storage</b>	<b>Protect from light. Do not freeze.</b> <ul style="list-style-type: none"> <li>12 months from date of receipt, 2 to 8 °C as supplied.</li> </ul>

## BACKGROUND

The TGF-β family includes several related proteins (70–80% sequence homology) from mammalian, avian, or *Xenopus* systems that are now designated TGF-β1, TGF-β2, TGF-β1.2, TGF-β3, TGF-β4, and TGF-β5. These proteins are secreted by cells in the form of an inactive complex, referred to as latent TGF-β, that consists of TGF-β associated non-covalently with a Latency-associated peptide (LAP). These two proteins are synthesized as a single pro-peptide that is cleaved in a post Golgi compartment prior to secretion. Different TGF-β family members are naturally associated with their own distinct LAPs.