

DESCRIPTION

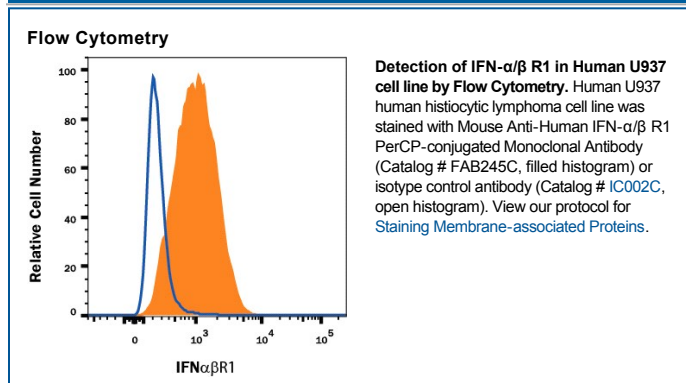
Species Reactivity	Human
Specificity	Detects human IFN- α/β R1 in direct ELISAs and Western blots. In direct ELISAs, no cross-reactivity with recombinant human (rh) IFN- γ R1, rhIFN- γ R2, recombinant mouse IFN- α/β R2, rhIL-10 R β , rhIL-10 R α , or rhIL-20 R β is observed.
Source	Monoclonal Mouse IgG ₁ Clone # 85228
Purification	Protein A or G purified from hybridoma culture supernatant
Immunogen	<i>S. frugiperda</i> insect ovarian cell line Sf 21-derived recombinant human IFN- α/β R1 Lys28-Lys436 Accession # AAA52730
Conjugate	PerCP (Peridinin-chlorophyll Protein Complex) Excitation Wavelength: 482 and 564 nm Emission Wavelength: 675 nm
Formulation	Supplied in a saline solution containing BSA and Sodium Azide. See Certificate of Analysis for details. *Contains <0.1% Sodium Azide, which is not hazardous at this concentration according to GHS classifications. Refer to the Safety Data Sheet (SDS) for additional information and handling instructions.

APPLICATIONS

Please Note: Optimal dilutions should be determined by each laboratory for each application. *General Protocols* are available in the *Technical Information* section on our website.

	Recommended Concentration	Sample
Flow Cytometry	10 μ L/10 ⁶ cells	See Below

DATA



PREPARATION AND STORAGE

Shipping	The product is shipped with polar packs. Upon receipt, store it immediately at the temperature recommended below.
Stability & Storage	Protect from light. Do not freeze. ● 12 months from date of receipt, 2 to 8 °C as supplied.

BACKGROUND

Type I interferons (IFN- α , IFN- β , IFN- ω) bind to the type I IFN receptor, also called the IFN alpha/beta receptor. This receptor is composed of two chains, IFN- α/β R1 and R2.

PRODUCT SPECIFIC NOTICES

Sold under license from Pestka Biomedical Laboratories, Inc. d/b/a PBL Interferon Source.