

DESCRIPTION

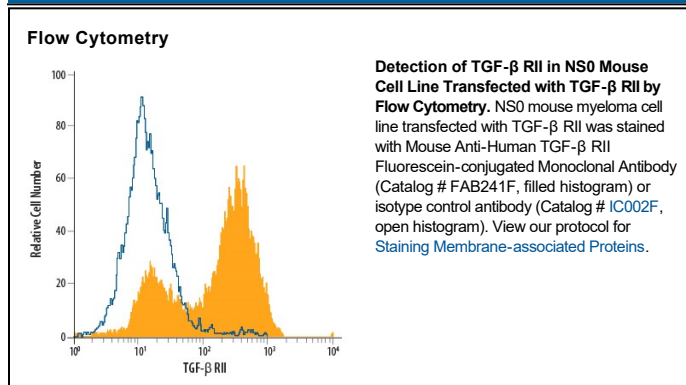
Species Reactivity	Human
Specificity	This antibody has been validated by flow cytometry on TGF- β RII-transfected cells only. In contrast to Catalog # FAB2411F , minimal staining of PBMC lymphocytes was observed with this antibody.
Source	Monoclonal Mouse IgG ₁ Clone # 25508
Purification	Protein A or G purified from hybridoma culture supernatant
Immunogen	Mouse myeloma cell line NS0-derived recombinant human TGF-beta RII Ile24-Asp159 Accession # P37173.2
Conjugate	Fluorescein Excitation Wavelength: 488 nm Emission Wavelength: 515-545 nm (FITC)
Formulation	Supplied in a saline solution containing BSA and Sodium Azide. See Certificate of Analysis for details. *Contains <0.1% Sodium Azide, which is not hazardous at this concentration according to GHS classifications. Refer to the Safety Data Sheet (SDS) for additional information and handling instructions.

APPLICATIONS

Please Note: Optimal dilutions should be determined by each laboratory for each application. *General Protocols* are available in the *Technical Information* section on our website.

	Recommended Concentration	Sample
Flow Cytometry	10 μ L/10 ⁶ cells	See Below

DATA



PREPARATION AND STORAGE

Shipping The product is shipped with polar packs. Upon receipt, store it immediately at the temperature recommended below.

Stability & Storage **Protect from light. Do not freeze.**

- 12 months from date of receipt, 2 to 8 °C as supplied.

BACKGROUND

TGF- β RII is a membrane bound serine/threonine kinase. Upon ligand binding, TGF- β RII interacts with TGF- β RI to form the heteromeric signaling complex that transduces TGF- β signals. A splice variant of the type II receptor, TGF- β RIIb, containing a 25 amino acid residue insertion near the N-terminus of the mature protein has also been described.