

## DESCRIPTION

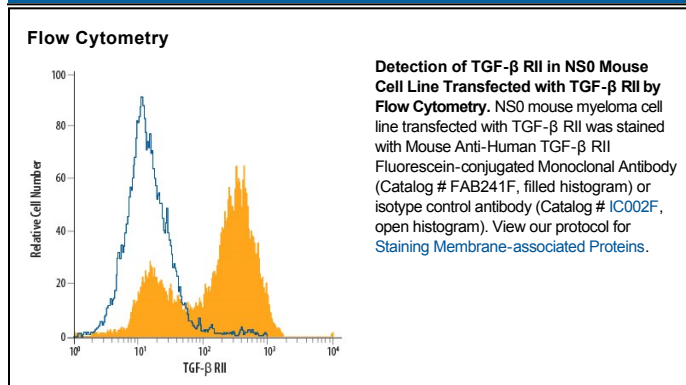
<b>Species Reactivity</b>	Human
<b>Specificity</b>	This antibody has been validated by flow cytometry on TGF- $\beta$ RII-transfected cells only. In contrast to Catalog # FAB2411F, minimal staining of PBMC lymphocytes was observed with this antibody.
<b>Source</b>	Monoclonal Mouse IgG <sub>1</sub> Clone # 25508
<b>Purification</b>	Protein A or G purified from hybridoma culture supernatant
<b>Immunogen</b>	Mouse myeloma cell line NS0-derived recombinant human TGF-beta RII Ile24-Asp159 Accession # P37173.2
<b>Conjugate</b>	Fluorescein Excitation Wavelength: 488 nm Emission Wavelength: 515-545 nm (FITC)
<b>Formulation</b>	Supplied in a saline solution containing BSA and Sodium Azide. See Certificate of Analysis for details.  *Contains <0.1% Sodium Azide, which is not hazardous at this concentration according to GHS classifications. Refer to the Safety Data Sheet (SDS) for additional information and handling instructions.

## APPLICATIONS

**Please Note:** Optimal dilutions should be determined by each laboratory for each application. *General Protocols* are available in the *Technical Information* section on our website.

	Recommended Concentration	Sample
<b>Flow Cytometry</b>	10 $\mu$ L/10 <sup>6</sup> cells	See Below

## DATA



## PREPARATION AND STORAGE

<b>Shipping</b>	The product is shipped with polar packs. Upon receipt, store it immediately at the temperature recommended below.
<b>Stability &amp; Storage</b>	<b>Protect from light. Do not freeze.</b> ● 12 months from date of receipt, 2 to 8 °C as supplied.

## BACKGROUND

TGF- $\beta$  RII is a membrane bound serine/threonine kinase. Upon ligand binding, TGF- $\beta$  RII interacts with TGF- $\beta$  RI to form the heteromeric signaling complex that transduces TGF- $\beta$  signals. A splice variant of the type II receptor, TGF- $\beta$  RIIb, containing a 25 amino acid residue insertion near the N-terminus of the mature protein has also been described.