

DESCRIPTION

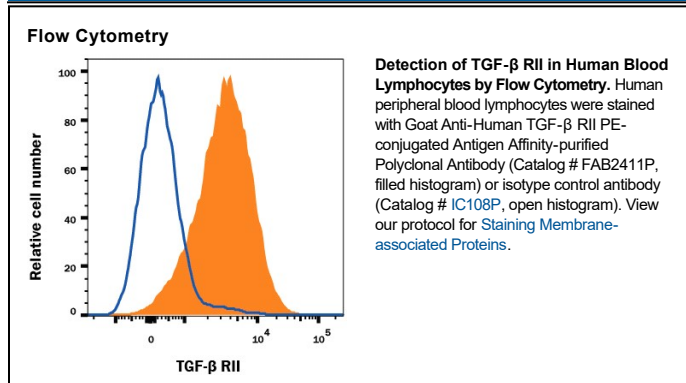
Species Reactivity	Human
Specificity	Detects human TGF-β RII in direct ELISAs and Western blots. In direct ELISAs, less than 5% cross-reactivity with recombinant mouse (rm) TGF-β RII and less than 1% cross-reactivity with recombinant human TGF-β RIII and rmTGF-β RI is observed.
Source	Polyclonal Goat IgG
Purification	Antigen Affinity-purified
Immunogen	Mouse myeloma cell line NS0-derived recombinant human TGF-β RII Ile24-Asp159 Accession # P37173.2
Conjugate	Phycoerythrin Excitation Wavelength: 488 nm Emission Wavelength: 565-605 nm
Formulation	Supplied in a saline solution containing BSA and Sodium Azide. See Certificate of Analysis for details. *Contains <0.1% Sodium Azide, which is not hazardous at this concentration according to GHS classifications. Refer to the Safety Data Sheet (SDS) for additional information and handling instructions.

APPLICATIONS

Please Note: Optimal dilutions should be determined by each laboratory for each application. *General Protocols* are available in the *Technical Information* section on our website.

	Recommended Concentration	Sample
Flow Cytometry	10 μL/10 ⁶ cells	See Below

DATA



PREPARATION AND STORAGE

Shipping	The product is shipped with polar packs. Upon receipt, store it immediately at the temperature recommended below.
Stability & Storage	Protect from light. Do not freeze. ● 12 months from date of receipt, 2 to 8 °C as supplied.

BACKGROUND

TGFβRII is a membrane bound serine/threonine kinase. Upon ligand binding, TGFβ RII interacts with TGFβRI to form the heteromeric signaling complex that transduces TGF β signals. A splice variant of the type II receptor, TGFβRIIb, containing a 25 amino acid residue insertion near the Nterminus of the mature protein has also been described.