

## DESCRIPTION

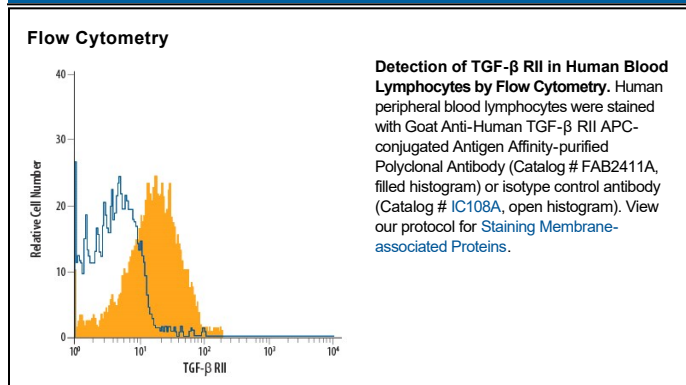
<b>Species Reactivity</b>	Human
<b>Specificity</b>	Detects human TGF- $\beta$ RII in direct ELISAs and Western blots. In direct ELISAs, less than 5% cross-reactivity with recombinant mouse (rm) TGF- $\beta$ RII and less than 1% cross-reactivity with recombinant human TGF- $\beta$ RIII and rmTGF- $\beta$ RI is observed.
<b>Source</b>	Polyclonal Goat IgG
<b>Purification</b>	Antigen Affinity-purified
<b>Immunogen</b>	Mouse myeloma cell line NS0-derived recombinant human TGF- $\beta$ RII Ile24-Asp159 Accession # P37173.2
<b>Conjugate</b>	Allophycocyanin Excitation Wavelength: 620-650 nm Emission Wavelength: 660-670 nm
<b>Formulation</b>	Supplied in a saline solution containing BSA and Sodium Azide. See Certificate of Analysis for details.  *Contains <0.1% Sodium Azide, which is not hazardous at this concentration according to GHS classifications. Refer to the Safety Data Sheet (SDS) for additional information and handling instructions.

## APPLICATIONS

**Please Note:** Optimal dilutions should be determined by each laboratory for each application. *General Protocols* are available in the *Technical Information* section on our website.

	Recommended Concentration	Sample
<b>Flow Cytometry</b>	10 $\mu$ L/10 <sup>6</sup> cells	See Below

## DATA



## PREPARATION AND STORAGE

<b>Shipping</b>	The product is shipped with polar packs. Upon receipt, store it immediately at the temperature recommended below.
<b>Stability &amp; Storage</b>	<b>Protect from light. Do not freeze.</b> <ul style="list-style-type: none"> <li>● 12 months from date of receipt, 2 to 8 °C as supplied.</li> </ul>

## BACKGROUND

TGF $\beta$ RII is a membrane bound serine/threonine kinase. Upon ligand binding, TGF $\beta$  RII interacts with TGF $\beta$ RI to form the heteromeric signaling complex that transduces TGF  $\beta$  signals. A splice variant of the type II receptor, TGF $\beta$ RIIb, containing a 25 amino acid residue insertion near the Nterminus of the mature protein has also been described.