

## DESCRIPTION

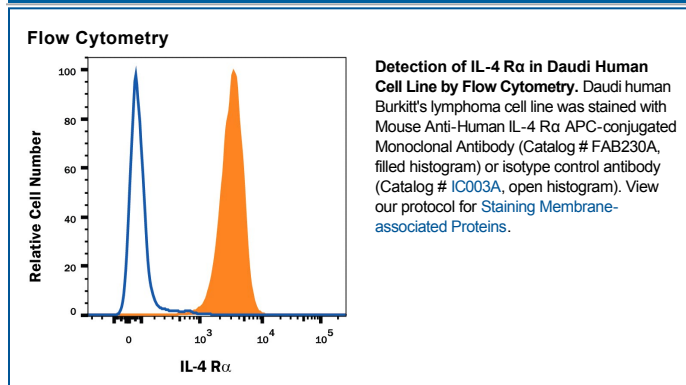
|                           |  |
|---------------------------|--|
| <b>Species Reactivity</b> | Human  |
| <b>Specificity</b>        | Detects human IL-4 R $\alpha$ in direct ELISAs and Western blots. In direct ELISAs, no cross-reactivity with recombinant human (rh) IL-9 R, recombinant mouse IL-4 R, rhIL-5 R $\alpha$ , rhIL-5 R $\beta$ , rhIL-13 R $\alpha$ 1, or rhIL-13 R $\alpha$ 2 is observed.  |
| <b>Source</b>             | Monoclonal Mouse IgG <sub>2A</sub> Clone # 25463   |
| <b>Purification</b>       | Protein A or G purified from ascites   |
| <b>Immunogen</b>          | <i>S. frugiperda</i> insect ovarian cell line Sf 21-derived recombinant human IL-4 R<br>Gly24-His232<br>Accession # P24394   |
| <b>Conjugate</b>          | Allophycocyanin<br>Excitation Wavelength: 620-650 nm<br>Emission Wavelength: 660-670 nm  |
| <b>Formulation</b>        | Supplied in a saline solution containing BSA and Sodium Azide. See Certificate of Analysis for details.<br><br>*Contains <0.1% Sodium Azide, which is not hazardous at this concentration according to GHS classifications. Refer to the Safety Data Sheet (SDS) for additional information and handling instructions. |

## APPLICATIONS

**Please Note:** Optimal dilutions should be determined by each laboratory for each application. *General Protocols* are available in the *Technical Information* section on our website.

|                       | Recommended Concentration        | Sample    |
|-----------------------|----------------------------------|-----------|
| <b>Flow Cytometry</b> | 10 $\mu$ L/10 <sup>6</sup> cells | See Below |

## DATA



## PREPARATION AND STORAGE

|                                |  |
|--------------------------------|--|
| <b>Shipping</b>                | The product is shipped with polar packs. Upon receipt, store it immediately at the temperature recommended below.                                  |
| <b>Stability &amp; Storage</b> | <b>Protect from light. Do not freeze.</b> <ul style="list-style-type: none"> <li>12 months from date of receipt, 2 to 8 °C as supplied.</li> </ul> |

## BACKGROUND

Interleukin 4 receptor (IL-4 R) is the transmembrane ligand binding subunit of the heterodimeric IL-4 receptor complex. In the type I receptor complex, IL-4 R associates with the common  $\gamma$  chain, whereas in the type II receptor complex, it associates with IL-13 R $\alpha$ 1. IL-4 R is expressed by B cells, T cells, monocytes and macrophages.