

## DESCRIPTION

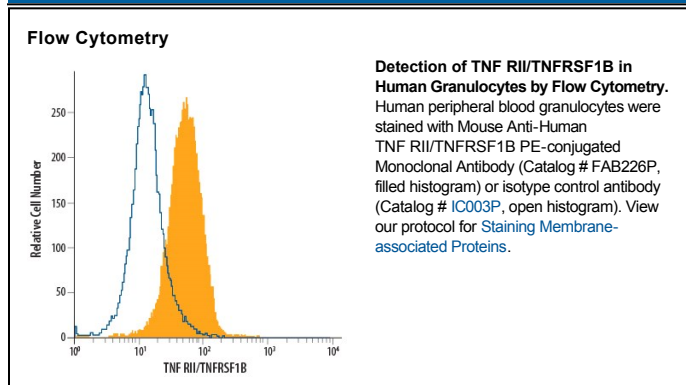
<b>Species Reactivity</b>	Human
<b>Specificity</b>	Detects human TNF RII in direct ELISAs and Western blots. In direct ELISAs, this antibody does not cross-react with recombinant human (rh) 4-1BB, rhBAFF R, rhCD27, rhCD30, rhCD40, rhDR3, rhDR6, rhEDAR, rhFas, rhGITR, rhHVEM, rhLymphotactin $\beta$ R, rhNGF R, rhOPG, recombinant mouse (rm) OX40, rhRANK, rhTAJ, rhTNF RI, or rmTNF RII.
<b>Source</b>	Monoclonal Mouse IgG <sub>2A</sub> Clone # 22235
<b>Purification</b>	Protein A or G purified from hybridoma culture supernatant
<b>Immunogen</b>	<i>E. coli</i> -derived recombinant human TNF RII Extracellular domain
<b>Conjugate</b>	Phycoerythrin Excitation Wavelength: 488 nm Emission Wavelength: 565-605 nm
<b>Formulation</b>	Supplied in a saline solution containing BSA and Sodium Azide. See Certificate of Analysis for details.  *Contains <0.1% Sodium Azide, which is not hazardous at this concentration according to GHS classifications. Refer to the Safety Data Sheet (SDS) for additional information and handling instructions.

## APPLICATIONS

**Please Note:** Optimal dilutions should be determined by each laboratory for each application. *General Protocols* are available in the *Technical Information* section on our website.

	Recommended Concentration	Sample
<b>Flow Cytometry</b>	10 $\mu$ L/10 <sup>6</sup> cells	See Below

## DATA



## PREPARATION AND STORAGE

<b>Shipping</b>	The product is shipped with polar packs. Upon receipt, store it immediately at the temperature recommended below.
<b>Stability &amp; Storage</b>	<b>Protect from light. Do not freeze.</b> <ul style="list-style-type: none"> <li>12 months from date of receipt, 2 to 8 °C as supplied.</li> </ul>

## BACKGROUND

TNF RII is a type I transmembrane glycoprotein primarily expressed on hematopoietic cells and is designated TNFRSF1B. TNF RII is a high-affinity receptor for TNF- $\alpha$  and TNF- $\beta$ . A soluble form of the receptor generated by proteolytic cleavage functions as a TNF antagonist.