

DESCRIPTION

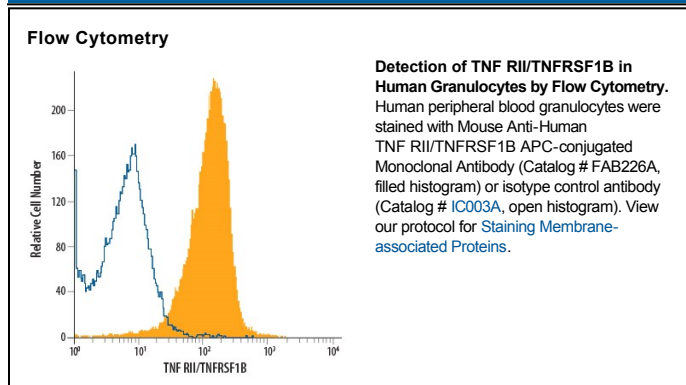
Species Reactivity	Human
Specificity	Detects human TNF RII in direct ELISAs and Western blots. In direct ELISAs, this antibody does not cross-react with recombinant human (rh) 4-1BB, rhBAFF R, rhCD27, rhCD30, rhCD40, rhDR3, rhDR6, rhEDAR, rhFas, rhGITR, rhHVEM, rhLymphotactin β R, rhNGF R, rhOPG, recombinant mouse (rm) OX40, rhRANK, rhTAJ, rhTNF RI, or rmTNF RII.
Source	Monoclonal Mouse IgG _{2A} Clone # 22235
Purification	Protein A or G purified from hybridoma culture supernatant
Immunogen	<i>E. coli</i> -derived recombinant human TNF RII Extracellular domain
Conjugate	Allophycocyanin Excitation Wavelength: 620-650 nm Emission Wavelength: 660-670 nm
Formulation	Supplied in a saline solution containing BSA and Sodium Azide. See Certificate of Analysis for details. *Contains <0.1% Sodium Azide, which is not hazardous at this concentration according to GHS classifications. Refer to the Safety Data Sheet (SDS) for additional information and handling instructions.

APPLICATIONS

Please Note: Optimal dilutions should be determined by each laboratory for each application. *General Protocols* are available in the *Technical Information* section on our website.

	Recommended Concentration	Sample
Flow Cytometry	10 μ L/10 ⁶ cells	See Below

DATA



PREPARATION AND STORAGE

Shipping	The product is shipped with polar packs. Upon receipt, store it immediately at the temperature recommended below.
Stability & Storage	Protect from light. Do not freeze. <ul style="list-style-type: none"> 12 months from date of receipt, 2 to 8 °C as supplied.

BACKGROUND

TNF RII is a type I transmembrane glycoprotein primarily expressed on hematopoietic cells and is designated TNFRSF1B. TNF RII is a high-affinity receptor for TNF- α and TNF- β . A soluble form of the receptor generated by proteolytic cleavage functions as a TNF antagonist.